



ORTIM a5 / a6 Windows

Setup instructions

ORTIM a5 / a6 Windows Setup instructions

Version 2.5

© 1995-2024 dmc-ortim GmbH. All rights reserved.

Gutenbergstraße 86
D-24118 Kiel

Telefon +49-431-550900-0

Email info@dmc-group.com

Internet www.dmc-group.com

Microsoft, Windows, Windows 10, Windows 11, Windows Server 2019, Windows Server 2022 are registered trademarks of Microsoft Corporation.

IBM, PC, PS/2 are registered trademarks of IBM Corporation.

PSQL and Zen are registered trademarks of Actian Corporation.

Adobe, Acrobat are registered trademarks of Adobe Systems Inc.

Other product designations and names are trademarks or registered trademarks of the respective companies or owners.



Table of contents

1	Overview	5
1.1	System Requirements	5
	ORTIM a5	5
	ORTIM a6 Windows	5
	User Manual	6
2	Installation	7
2.1	Installing ORTIM a5	7
	License Agreement	7
	Install Location	8
	Start Menu Folder	9
	Exit Setup	9
	Transfer Program to ORTIM a5	10
2.2	Installing ORTIM a6 Windows	12
	License Agreement	13
	Install Location	13
	Data Directory	14
	Shortcuts	15
	Start Menu Folder	15
	Summary	16
	Exit Setup	16
	Database installation	17
	Activation	18
2.3	Starting the Program	19
3	USB-to-Ethernet-Adapter	20
3.1	Installation	20
	Windows 8.1 and Newer	20

3.2	3.2 Establishing the Connection	21
4	License Agreement	22
4.1	§1 Subject of the Agreement	22
4.2	§2 License fee, commencement of Agreement	22
4.3	§3 Scope of the License	22
4.4	§4 Transfer of the License	23
4.5	§5 Limitations of the License	23
4.6	§6 Warranty and Liability	23
4.7	§7 Breach of this Agreement	24
4.8	§8 Safeguarding clause, written form, jurisdiction	24
	Index	0

ORTIM a5 is a data entry and analysis system for time studies. It consists of the ORTIM a5 data entry device and the associated software. In addition, it also comprises the ORTIM a6 Windows PC software, which emulates the ORTIM a5 device under Microsoft Windows.

If you have newly acquired an ORTIM a5 device, the necessary software will be pre-installed on this device, meaning that the device is ready for operation. Installation on the PC is useful, for instance, if you wish to read and print out the manual. Furthermore, you require a network connection for the communication between ORTIMzeit and your ORTIM a5. In order to establish this connection, you are generally required to install a driver (refer to [3. USB-to-Ethernet-Adapter](#)^[20]).

Installation is necessary later if you have acquired a more recent program version. The program files required for operation are transferred in the same way as time studies via ORTIMzeit to ORTIM a5. This means that you do not have to send in the device in order to have the software updated.

If you do not have the ORTIM a5 data entry device but have acquired the ORTIM a6 Windows PC software, this software naturally has to be installed before it can be used.

1.1 System Requirements

ORTIM a5

In order to exchange data with your ORTIM a5, you require a PC on which the ORTIMzeit software is installed and which has a free USB port. This USB port is required for a network adapter, which is used for establishing the connection between the ORTIM a5 device and the computer on which the ORTIMzeit program is running. If an USB port is not available, it is necessary to set up the network connection (TCP/IP) in a different way, e.g. by means of an additional network interface card on the ORTIMzeit PC or by linking the ORTIM a5 device into the company network.

ORTIM a6 Windows

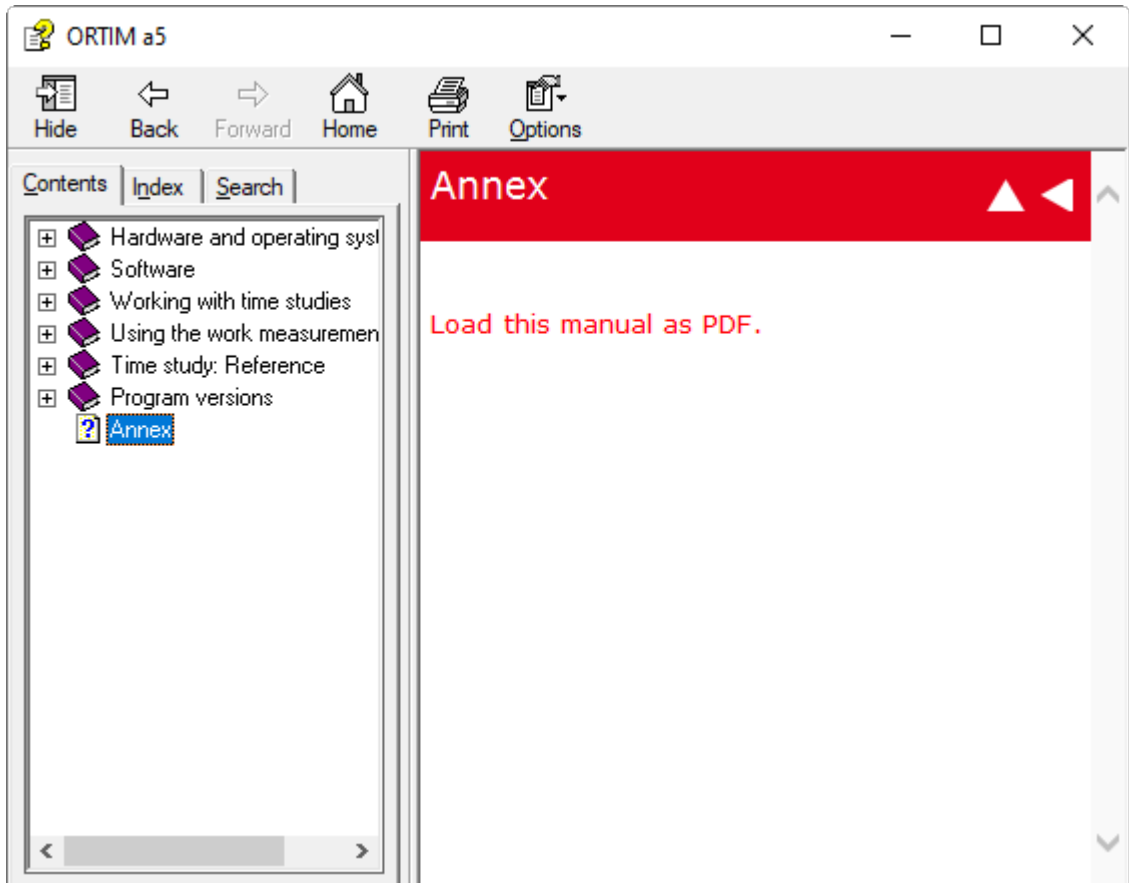
For the ORTIM a6 Windows software, you require a PC with Windows 8.1, Windows 10 or newer. If the software is protected by means of a dongle (Sentinel HL from the company SafeNet), the PC must have a free USB port.



ORTIM a6 Windows does not run under Windows RT, and can not be installed on computers that use this operating system.

User Manual

The user manual to ORTIM a5 and ORTIM a6 Windows is available as online help. You will find an annex there with a link to export the user manual as pdf document.



2.1 Installing ORTIM a5

ORTIM a5 can be downloaded from the dmc-ortim download center.

Please contact dmc-ortim for login data.

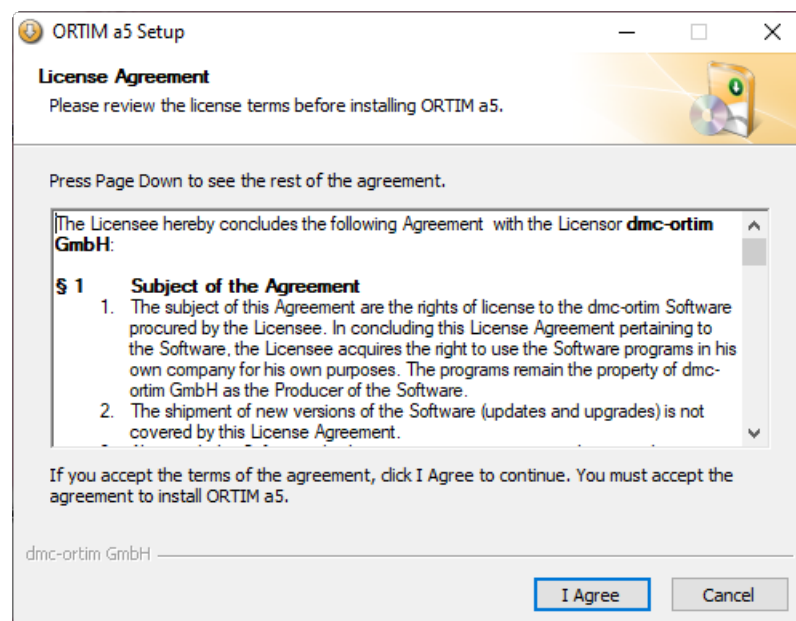
Please start the downloaded file "SETUP.EXE" after the download is finished.



Load the installation file from the download center and launch the setup routine by double-clicking on the program icon "Setup" or "Setup.exe".

You will now be guided through the installation in a number of steps. Please be sure to read all the information carefully that is displayed during the installation. It is possible to abort the installation at almost all stages by clicking on the "Cancel" button. This also applies if the installation is already in progress.

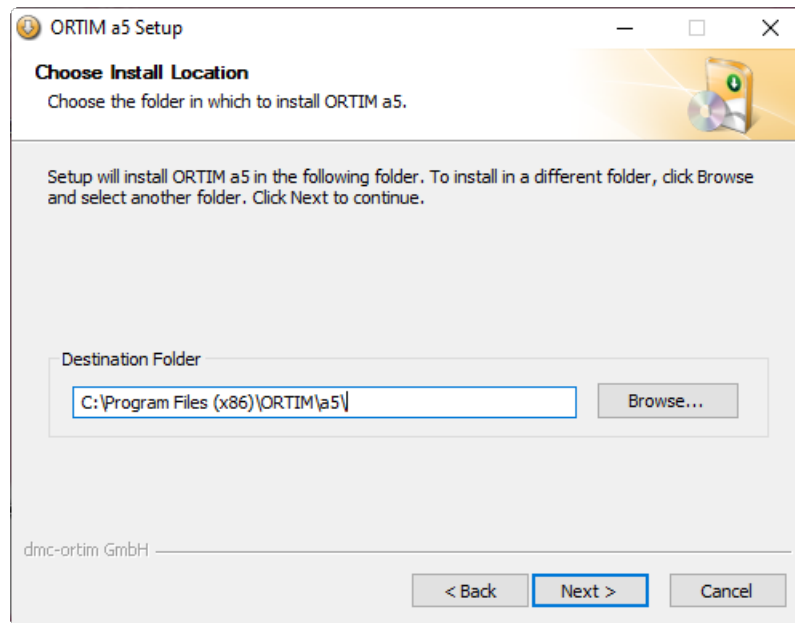
License Agreement



After an initial screen and the notification to exit all other programs during the installation, you will be prompted to agree to the software License Agreement. If you do not agree to

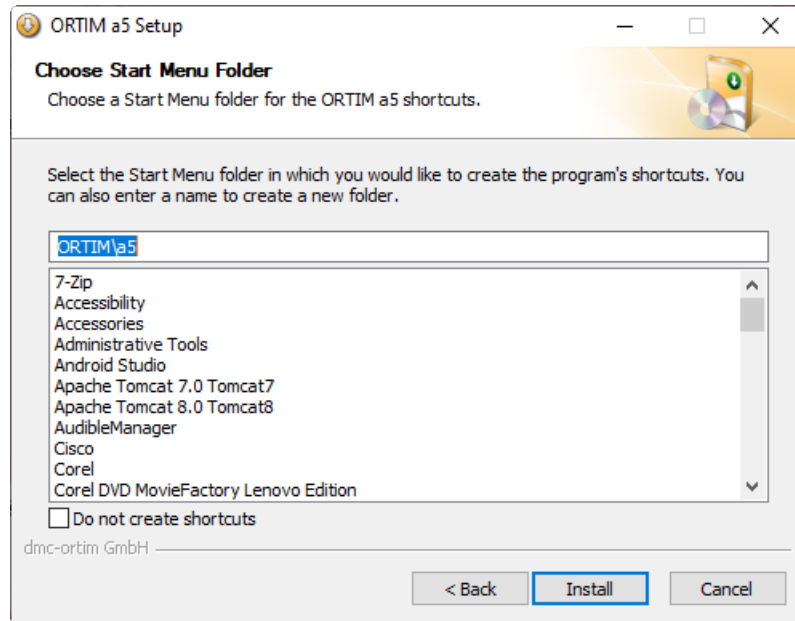
this Agreement, you will not be able to use the software. If you do not understand this Agreement, or you believe that this Agreement does not apply to you, please contact dmc-ortim GmbH.

Install Location



In the next step, you will be prompted to specify a directory into which ORTIM a5 / a6 Windows is to be installed. If you do not wish to use the default directory, you can enter the directory you require or select it using the “Browse” function.

Start Menu Folder

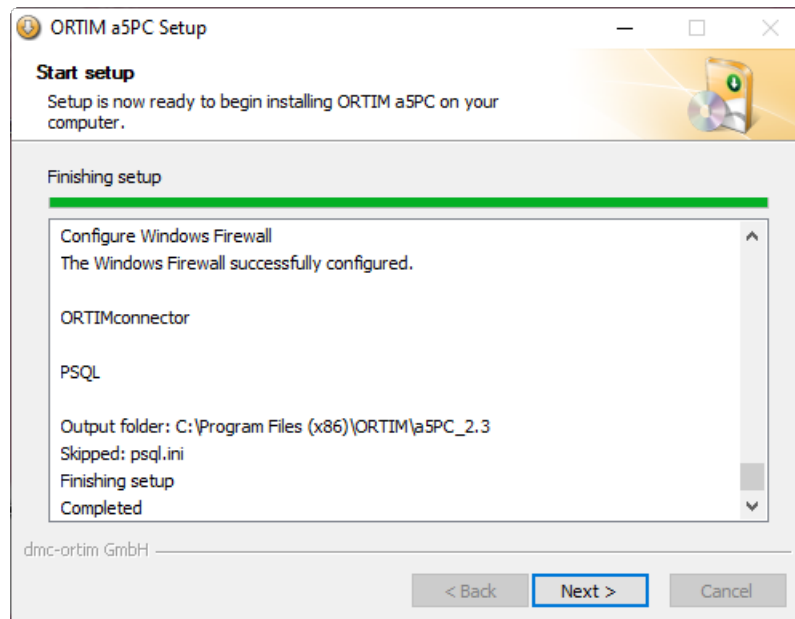


If you have decided that you would like to have a Start Menu shortcut, you now have to select the corresponding folder.

You can then define the Start Menu folder. If you do not wish to create a shortcut in the Start Menu, you can do this by selecting the option “Do not create shortcuts”.

Selecting button “Install” launches the installation.

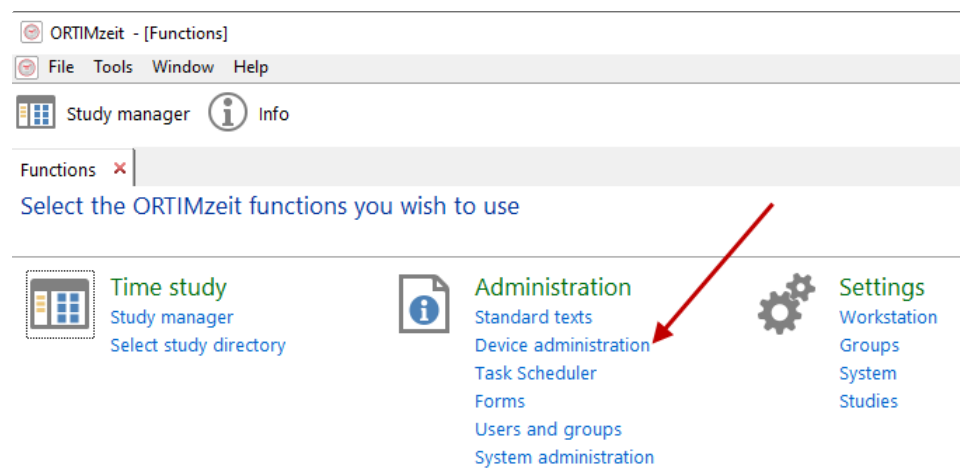
Exit Setup



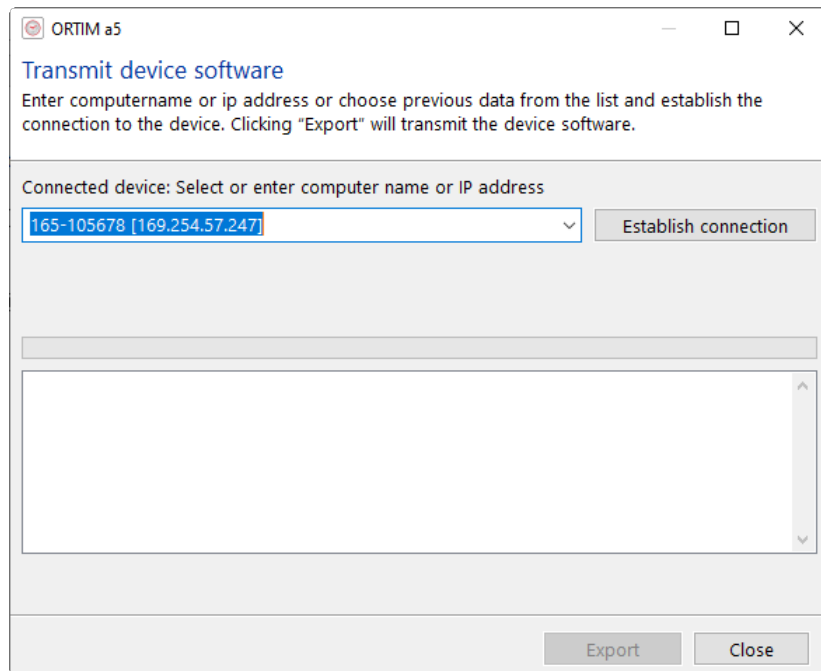
Both during and after the installation, details of the installation procedure are displayed. After selecting “Next”, a final screen will be displayed, which allows you to select actions that are to be started on completion of the installation.

Transfer Program to ORTIM a5

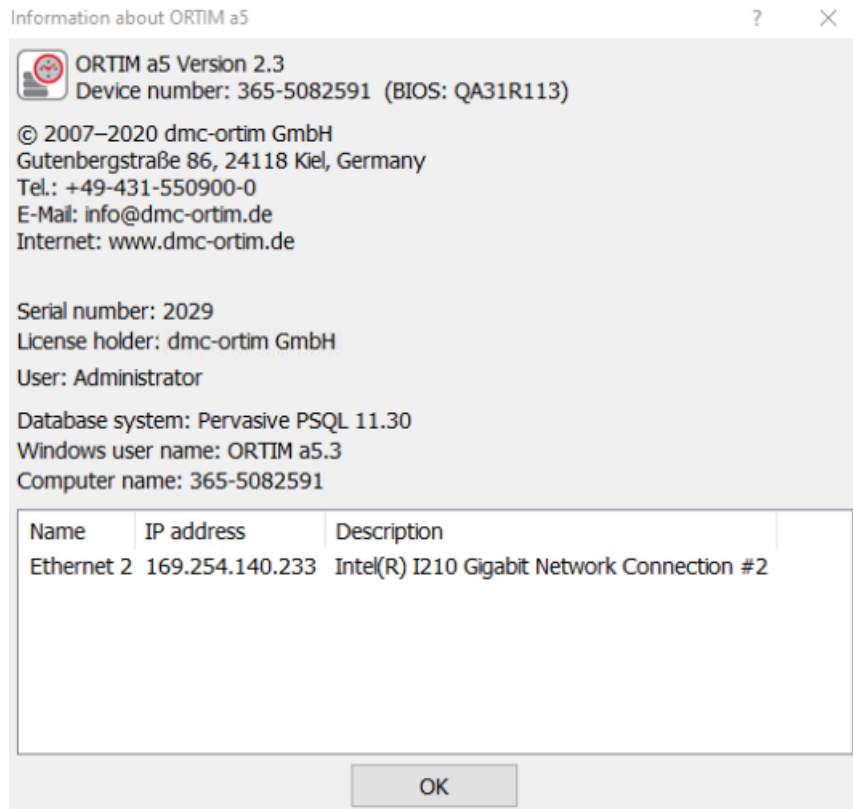
If you have installed ORTIM a5 in order to update the software in your device to the latest release, you now need to transfer the new program version to your ORTIM a5 device. You do this by selecting the Device Manager in ORTIMzeit (s. ORTIMzeit manual) in the function view and subsequently pressing the button “Transmit ORTIM a5 device software”.



A window will then open in which you are required to specify the connected device. It is possible to select the device from the drop-down list, if it has already been used for exchanging data. If you are connecting to this device for the first time, it is possible to specify the computer name or the IP address of the ORTIM a5 device. We recommend the use of the IP address.



You can find out the computer name and IP address in the ORTIM a5 device under option “Info” in the Help menu. If more than one IP address is displayed, you then need to enter the one via which the ORTIM a5 device is connected with the workstation computer. Next, select button “Connect”. You will then see information about the version numbers of the installed and new program version. If the “new version” is in fact newer than the installed version, you can transfer this to the ORTIM a5 device by selecting the button “Start”.



Always be sure to exit the time study program on the device prior to starting the transfer.

Wait for ORTIMzeit to confirm that the transfer is complete before you start the time study program.

2.2 Installing ORTIM a6 Windows

ORTIM a6 Windows can be downloaded from the dmc-ortim download center.

Please contact dmc-ortim for login data.

After download please start the downloaded file "SETUP.EXE".

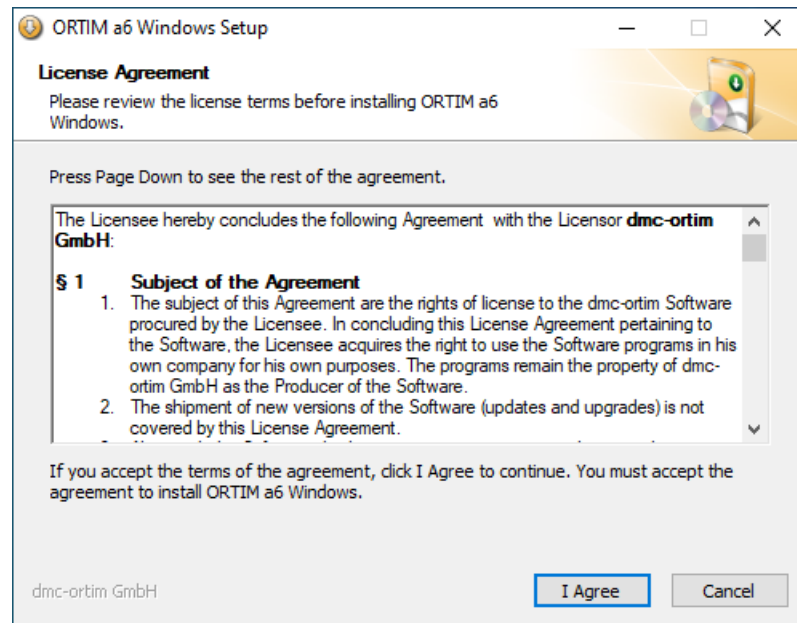


Load the installation file from the download center and launch the setup routine by double-clicking on the program icon "Setup" or "Setup.exe".

You will now be guided through the installation in a number of steps. Please be sure to read all the information carefully that is displayed during the installation. It is possible to abort the installation at almost all stages by clicking on the "Cancel" button. This also applies if the installation is already in progress.

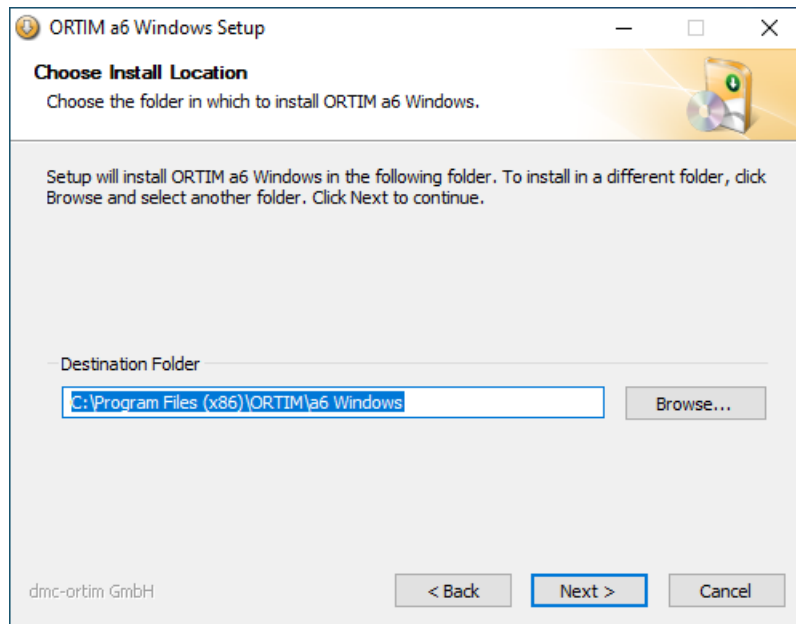
License Agreement

After an initial screen and the notification to exit all other programs during the installation, you will be prompted to agree to the software License Agreement. If you do not agree to this Agreement, you will not be able to use the software. If you do not understand this Agreement or believe that this Agreement does not apply to you, please contact dmc-ortim GmbH.



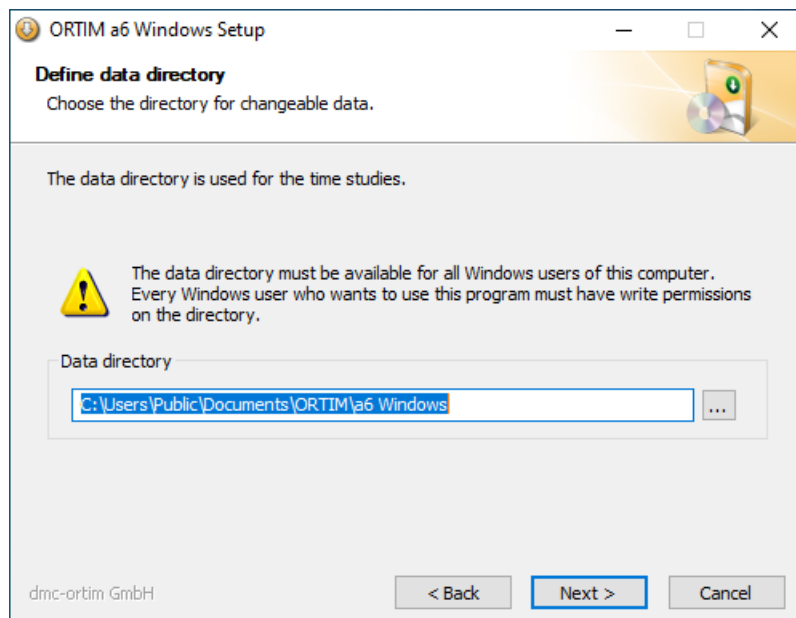
Install Location

In the next step, you will be prompted to specify a directory into which ORTIM a6 Windows is to be installed. If you do not wish to use the default directory, you can enter the directory you require or select it using the "Browse" function.



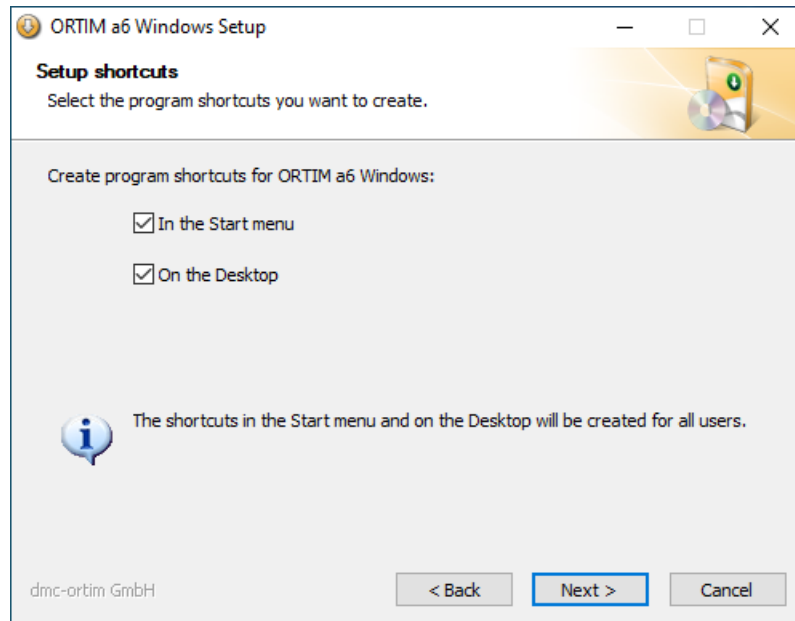
Data Directory

In the PC version, you are also required to define the directory in which you wish ORTIM a6 Windows to save the time studies. You should select this directory in such a manner that all Windows users who want to use the program can see this directory. During the installation, the setup program sets write permissions for this directory for the Windows users in the group "User".



Shortcuts

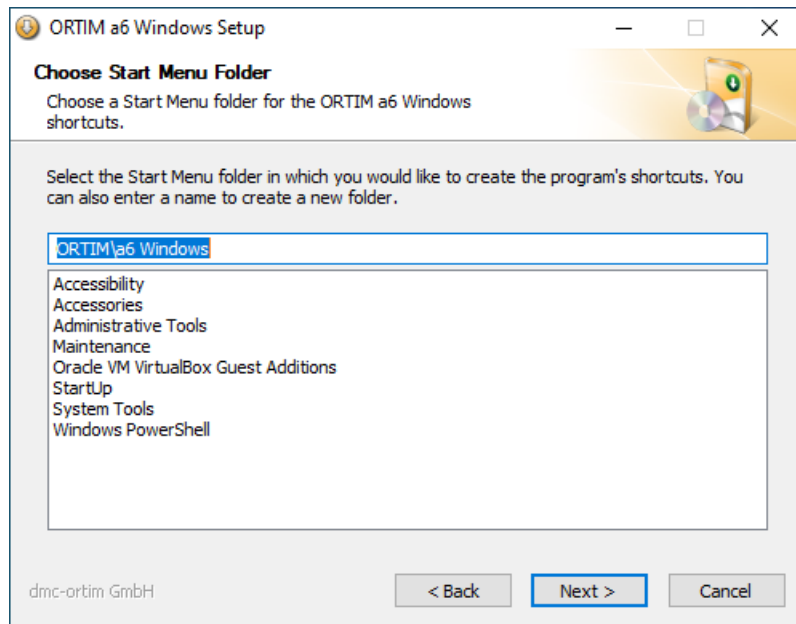
You are then required to select the shortcuts you need. It is only possible to create a shortcut in the Quick Launch bar for the active user. The other shortcuts are created for all the users, if necessary.



Start Menu Folder

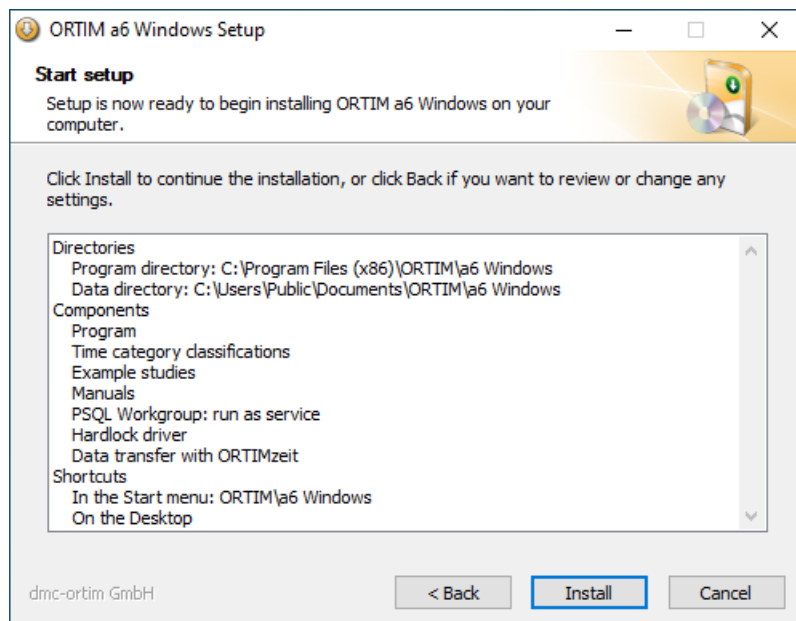
If you have decided that you would like to have a Start menu shortcut, you now have to select the corresponding folder.

During the installation of ORTIM a6 Windows, this entry window always opens. If you do not wish to create a shortcut in the Start menu, you can do this by selecting the option "Do not create shortcut".



Summary

Prior to running the installation routine, a summary of the selected options is displayed. Select button "Install" to launch the installation.



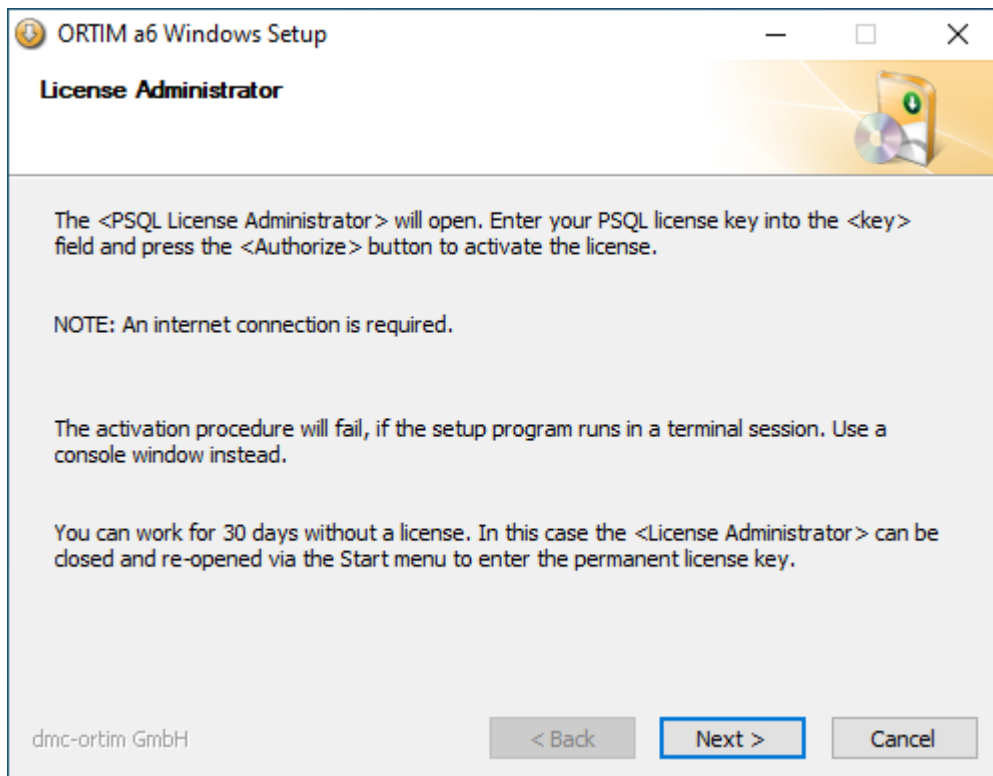
Exit Setup

Both during and after the installation, details of the installation procedure are displayed. After selecting "Next", a final screen will be displayed, which allows you to select actions that are to be started on completion of the installation.

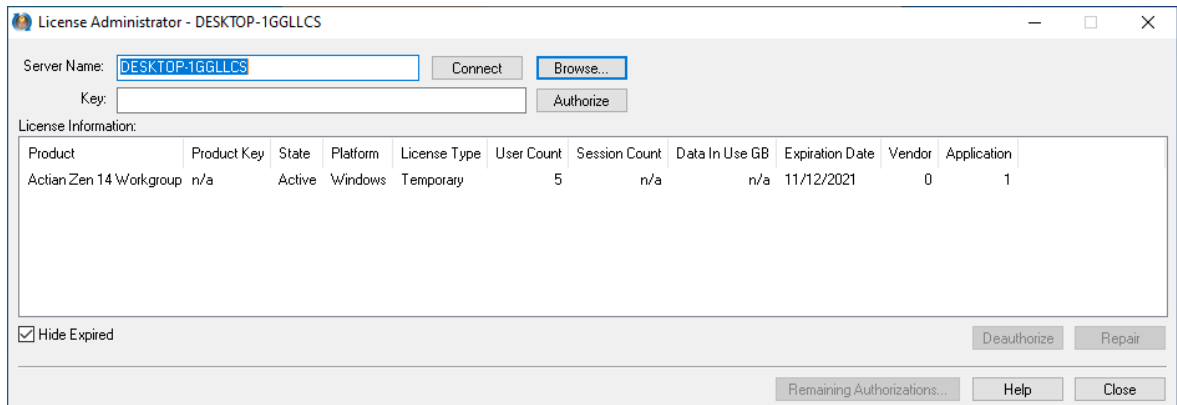


Database installation

During the ORTIM a6 Windows installation a window regarding the installation of the Actian Zen workgroup database will be opened, if a database is not yet installed. You will be prompted to enter a license key for the database.



The input window for the license key for the database Actian Zen will open.



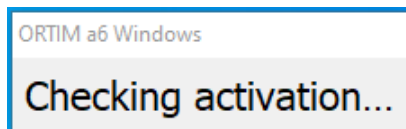
You will receive the license key for the Actian Zen database from dmc-ortim if you acquired the database from dmc-ortim.

Enter the license key in the key field and activate it with "Authorize". This requires administrator rights and an Internet connection.

The license keys are computer-bound and cannot be activated more than once.

Activation

When you start the program for the first time, the activation status will be checked:



After a short time, the following message appears:

ORTIM a6 Windows - Activation

ORTIM a6 Windows Version 2.4.0

Please send the the serialnumber and the device code to dmc-ortim. You obtain thereupon the activation code and the licensee data.

Press OK to apply the license data.

Serial number:

Device code:

License holder: 0 Characters (max. 123), checksum: 0

Activation code: - -

Send your device code and serial number to dmc-ortim GmbH (see shipping list). You may copy the device code to the Clipboard and send it to dmc-ortim by email. You will then receive your activation data from dmc-ortim. The activation data are bound to the workstation computer and can not be used elsewhere.

2.3 Starting the Program

It is possible start the work measurement program by double-clicking on the icon on the Windows desktop or by selecting “All Programs – ORTIM – a5 – ORTIM a5” or “All Programs – ORTIM – ORTIM a6 Windows” via the Start menu. The program first asks you for a user name and password. If you do not enter this information within 60 seconds, the entry procedure will be cancelled. “Administrator” is set by default as the user. This user has the password 444.

Your ORTIM a5 is supplied with a 'crossover cable' and either a "USB-to-Ethernet converter" or a "USB2.0 to Fast Ethernet Adapter", which can be used for connecting the network connection of the ORTIM a5 device with an USB port on the workstation computer. To this end, you need to install the driver for the adapter on the workstation computer. Administrator rights are required to perform this installation.

Originally, the white converters/adapters from Digitus were supplied, followed later by the black ones from LogiLink. The white adapter also works with Windows 8.1 and newer, but not however with the 64-bit versions of the Windows operating systems.



3.1 Installation

At this juncture, the installation of the adapter under Windows 8.1 and newer is explained. The installation under other Windows variants is performed in a similar way.

Windows 8.1 and Newer

If you do not have a connection to the Internet, the drivers then have to be installed manually. If you do have a connection to the Internet, you can skip the next step and attach the USB adapter directly.

Prior to attaching the adapter, please download the installation program for the driver from the internet and transfer the installation program to the workstation computer. You will find the URL for downloading the program on the cover supplied with your device.

If you are using the white Digitus adapter, execute the SETUP.EXE program from directory USB to Ethernet Adapter. If you are using the black LogiLink adapter, execute the SETUP.EXE program from directory LogiLink USB 2.0 to Fast Ethernet Adapter UA0025C.

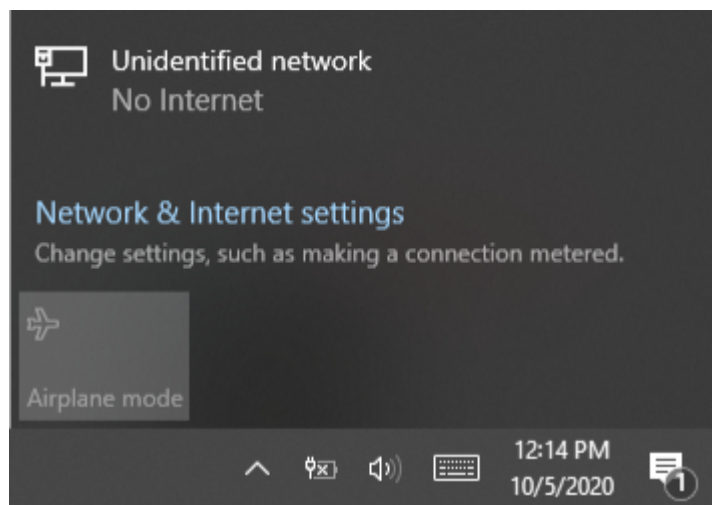
Attach the adapter to a free USB port on the workstation computer. You will then receive a message informing you that device driver software is being installed, before the message finally appears telling you that the device driver software has been successfully installed.

If, instead, you receive a message telling you that the driver software could not be installed, restart the workstation computer and repeat the installation procedure as if you had no connection to the Internet.

3.2 3.2 Establishing the Connection

Once the USB-to-Ethernet converter has been connected to the workstation computer and the driver is installed if necessary, it is possible to connect the ORTIM a5 device with the workstation computer using the crossover cable. Both computers then go into status “Obtaining network address“, which they generally display by means of a moving dot over the network icon in the task bar.

After a while (which can sometimes take one to two minutes), the “Unidentified network“ message is displayed.



This message is usual for this type of connection and only means that it is not possible to set up a connection to the Internet via this network connection at this moment in time. It is possible, however, to exchange data with ORTIMzeit.

The Licensee hereby concludes the following Agreement with Licensor, dmc-ortim GmbH.

4.1 §1 Subject of the Agreement

1. The subject of this Agreement are the rights of license to the dmc-ortim Software procured by the Licensee. In concluding this License Agreement pertaining to the Software, the Licensee acquires the right to use the Software programs in his own company for his own purposes. The programs remain the property of dmc-ortim GmbH as the Producer of the Software.
2. The shipment of new versions of the Software (updates and upgrades) is not covered by this License Agreement.
3. Along with the Software, the Licensee receives user manual texts and information material, which is merely of a descriptive nature.
4. This Agreement automatically applies for subsequent orders of Software Licenses. The Software, comprising in each case the data media with the computer program itself along with the program protection facility and user manual texts, is protected by copyright. As far as dmc-ortim GmbH itself does not own these copyrights pertaining to the Software or parts thereof, it does, however, own the rights which allow their transfer for use by third parties.

4.2 §2 License fee, commencement of Agreement

1. The license fee will be stipulated by dmc-ortim GmbH in the form of a separate invoice.
2. This Agreement commences on being countersigned by the Licensee or at the latest, however, when the Software is put into use.

4.3 §3 Scope of the License

1. dmc-ortim GmbH grants the Licensee the unlimited, non-exclusive and personal right to use the Software on a stand-alone computer or on a network computer.
2. If the Software is installed on a network server, a separate License is required not for the server itself but for each computer on which the software is to run.
3. The Licensee is entitled to create backup copies of the Software, as far as this is required for normal usage.

4.4 §4 Transfer of the License

1. The right for using the Software can only be transferred to third parties with the written consent of dmc-ortim GmbH.
2. This also applies if the Software is only transferred to third parties for a short period of time.

4.5 §5 Limitations of the License

1. The Licensee is obligated to leave the Software in its original condition. In particular, he is not entitled to reverse engineer, decompile, disassemble or modify the Software in any other way.
2. Except for the purpose of creating his own backup copies, the Licensee is not entitled to reproduce the software. In particular, he is not entitled to make such copies or the actual Software available to third parties, unless the Software is also meant to be used by third parties and has an interface to the outside for this purpose.

4.6 §6 Warranty and Liability

1. dmc-ortim systems are standard software applications. dmc-ortim GmbH reserves the right to implement modifications to its standard software that are designed to enhance the user benefits or for other practical reasons.
2. If a fault occurs in the Software, the Licensee is obliged to notify dmc-ortim GmbH of this at once or at the latest within two weeks of its occurrence. This fault report is to be sent in conjunction with the log file to dmc-ortim GmbH (in the form of a printout, copied onto a data medium, transmitted by e-mail). If requested, the Licensee shall also supply dmc-ortim GmbH with the data in which the error was observed. dmc-ortim GmbH guarantees that these data will only be used for fault analysis purposes and subsequently deleted instantly.
3. A fault is regarded as a reproducible abnormal program termination in conjunction with an error message or malfunction, and not the absence of an additional program function desired by the Licensee.
4. dmc-ortim GmbH shall rectify at its own expense legitimate software errors. dmc-ortim GmbH shall endeavor to eliminate any such errors as swiftly as possible.
5. dmc-ortim GmbH is not liable for damages arising from software errors, unless, that is, legal regulations explicitly oppose this. The liability – both for dmc-ortim GmbH's own fault and for the fault of vicarious agents – is limited to wilful intent and gross negligence. The liability on the part of dmc-ortim GmbH for vicarious agents is limited, provided that this does not involve higher-level management, to the care exercised in the selection of the vicarious agents and their supervision.
6. In the case of gross negligence, the extent of any damage claim is restricted to the net price for the agreed service. Any compensation for damage is always restricted – in terms of the sum – to the cover provided by dmc-ortim GmbH's business liability insurance at the time of the damage occurring. This insurance cover currently stands at EUR 250,000.
7. dmc-ortim GmbH accepts no liability for errors, disturbances or damage arising from improper operation, the use of unsuitable equipment, abnormal operating conditions and, in the case of online connections to the central system of an external manufacturer, for errors, disturbances or damage attributable to this central system or the associated line network.

4.7 §7 Breach of this Agreement

1. dmc-ortim GmbH is entitled to cancel this License Agreement at any time and with immediate effect if the Licensee breaches any of the provisions set out in it.
2. The Licensee is liable to dmc-ortim GmbH for any damages arising from the breach of obligations derived from this Agreement. For each breach of this Agreement, dmc-ortim GmbH can – irrespective of further claims for damages – and to the exclusion of the continuation of the circumstances responsible for causing the breach – impose a penalty equivalent to 100% of the purchase price for the corresponding overall program, without dmc-ortim GmbH having to prove in detail the actual damage incurred. Payment of this penalty does not release the Licensee from his obligations to comply with the provisions of this Agreement.
3. If, contrary to § 5 subsection 1 of this Agreement, the Licensee tampers with the program and changes the running of the Software, he is also liable to pay dmc-ortim GmbH a penalty of EUR 10,000.

4.8 §8 Safeguarding clause, written form, jurisdiction

1. If parts of this Agreement are or become invalid or partially invalid, this does not affect the validity of the remaining provisions. In such instances, the contracting parties are obliged moreover to replace the invalid provision with one that comes as close as possible to the original business objective. Any amendments to this Agreement require the written form.
2. Amendments to this Agreement can only be made in writing; this also applies to this written form clause.
3. This Agreement is subject to German law. The place of jurisdiction is Kiel.