



**DMC**  
dmc - ortim

# ORTIMnotes

Setup instructions

ORTIMnotes  
Setup instructions

© 1995–2024 dmc-ortim GmbH. All rights reserved.

Gutenbergstraße 86  
24118 Kiel, Germany

Phone +49-431-550900-0  
Email [info@dmc-group.com](mailto:info@dmc-group.com)  
Internet [www.dmc-group.com](http://www.dmc-group.com)

Microsoft, Windows, Windows 8.1, Windows 10, Windows 11, Windows Server 2012 R2, Windows Server 2016, Windows Server 2019, Windows Server 2022 are registered trademarks of Microsoft Corporation.

PSQL and Zen are registered trademarks of Actian Corporation.

Other product designations and names are trademarks or registered trademarks of the respective companies or owners.

# Contents

|  | Page      |
|--|-----------|
| <b>1 Overview</b> .....  | <b>1</b>  |
| 1.1 System requirements .....  | 1         |
| Microsoft Windows 8.1, Windows 10, Windows 11 .....  | 2         |
| Microsoft Windows Server 2012 R2, Windows Server 2016, Windows Server 2019,<br>Windows Server 2022 ..... | 2         |
| 1.2 Data security .....  | 3         |
| Access authorization .....   | 3         |
| Encryption .....   | 3         |
| Access control in the network .....  | 4         |
| 1.3 Copy protection .....  | 4         |
| Softlock .....   | 4         |
| 1.4 Multitenancy .....   | 4         |
| <b>2 System Architecture</b> .....   | <b>7</b>  |
| dmc-ortim server .....   | 7         |
| dmc-ortim terminal server .....  | 7         |
| dmc-ortim workstation PC .....   | 8         |
| 2.1 Architecture of the dmc-ortim server .....   | 9         |
| 2.2 Architecture of the dmc-ortim terminal server .....  | 10        |
| 2.3 Architecture of the dmc-ortim workstation PC .....   | 11        |
| <b>3 Software protection</b> .....   | <b>13</b> |
| 3.1 License file (Softlock) .....  | 14        |

|   |    |
|---|----|
| Installation of the license (.exe file) . . . . .       | 14 |
| Program directory . . . . .                             | 14 |
| Installation of the license (.zip file) . . . . .       | 15 |
| Activate license . . . . .                              | 15 |
| Automatic activation . . . . .                          | 15 |
| Activate license manually . . . . .                     | 16 |
| Deactivate the license . . . . .                        | 19 |
| Disable license via the help menu . . . . .             | 19 |
| Disable license via the system administration . . . . . | 19 |
| Entering a PIN code . . . . .                           | 20 |
| License monitor . . . . .                               | 21 |
| Validity period of the license . . . . .                | 22 |
| Status messages . . . . .                               | 22 |

## **4 Installation . . . . . 23**

|   |    |
|---|----|
| 4.1 Preparing the installation . . . . .                        | 23 |
| Program directory . . . . .                                     | 23 |
| Data directory . . . . .  | 23 |
| Zen working directory . . . . .                                 | 24 |
| Configuring directories on PC or notebook PC . . . . .          | 24 |
| Program directory . . . . .                                     | 24 |
| Data directory . . . . .  | 24 |
| Zen working directory . . . . .                                 | 24 |
| Configuring directories on a network server . . . . .           | 24 |
| Program directory . . . . .                                     | 24 |
| Data directory . . . . .  | 25 |
| 4.2 Full Installation . . . . .                                 | 26 |
| Full Installation . . . . .                                     | 26 |
| Start the full installation, Choose Installation Mode . . . . . | 26 |
| Choose program directory . . . . .                              | 30 |
| Choose the data directory . . . . .                             | 31 |
| Choose application and settings area . . . . .                  | 32 |
| Select database . . . . .                                       | 33 |
| Decision support for the selection of the database . . . . .    | 33 |
| Apply privileges . . . . .                                      | 34 |
| Setup shortcuts . . . . .                                       | 35 |
| Software updates . . . . .                                      | 36 |

|      |  |    |
|------|--|----|
|      | Copy data from previous version . . . . .          | 37 |
|      | Choose license . . . . .                           | 38 |
|      | Start setup . . . . .                              | 39 |
|      | Installation progress . . . . .                    | 40 |
|      | Completion of the installation procedure . . . . . | 42 |
|      | Load software updates . . . . .                    | 43 |
| 4.3  | Launching the program . . . . .                    | 44 |
|      | Softlock . . . . .                                 | 45 |
|      | Install Softlock . . . . .                         | 45 |
|      | Activate Softlock . . . . .                        | 45 |
| 4.4  | Starting the program . . . . .                     | 46 |
| 4.5  | Assign serial numbers . . . . .                    | 48 |
|      | Problems on program startup . . . . .              | 49 |
|      | PC user permissions . . . . .                      | 49 |
|      | Zen settings . . . . .                             | 49 |
|      | Database problems . . . . .                        | 49 |
|      | Diagnosis and log file . . . . .                   | 49 |
|      | Login user . . . . .                               | 50 |
| 4.6  | Update installation . . . . .                      | 51 |
|      | Choose install location . . . . .                  | 52 |
|      | Check the data directory . . . . .                 | 53 |
|      | Setup shortcuts . . . . .                          | 54 |
|      | Copy data from previous version . . . . .          | 55 |
|      | Start setup . . . . .                              | 56 |
| 4.7  | Using updates . . . . .                            | 56 |
| 4.8  | Configure program to run as service . . . . .      | 58 |
|      | When do I need the service? . . . . .              | 58 |
|      | Do I need a separate license? . . . . .            | 58 |
|      | Setup service . . . . .                            | 59 |
| 4.9  | Setup a client PC . . . . .                        | 62 |
|      | Choose program directory . . . . .                 | 63 |
|      | Installation . . . . .                             | 64 |
| 4.10 | Terminalserver/Citrix Metaframe . . . . .          | 65 |
| 4.11 | Possible application scenarios . . . . .           | 66 |

|          |  |           |
|----------|--|-----------|
|          | Standalone workstation application .....   | 66        |
|          | Network application .....  | 66        |
|          | Training application .....   | 66        |
|          | Test installation .....  | 67        |
|          | Other application scenarios .....  | 68        |
| 4.12     | Configuring the program on a new PC .....  | 68        |
|          | Backup files .....   | 68        |
|          | Application databases .....  | 68        |
|          | Forms database .....   | 68        |
|          | Time category allowances .....   | 68        |
|          | Settings .....   | 69        |
|          | User Manager .....   | 69        |
|          | Customer files .....   | 69        |
| <b>5</b> | <b>Database Action Zen .....</b>   | <b>71</b> |
|          | Database Action Zen offers .....   | 71        |
|          | Industry-leading performance .....   | 71        |
|          | Low Total cost of ownership .....  | 71        |
| 5.1      | Using the Database Action Zen .....  | 72        |
|          | Manage database licenses .....   | 72        |
| 5.2      | Database status messages .....   | 73        |
|          | Status 2 .....   | 73        |
|          | Status 9 .....   | 73        |
|          | Status 12: File not found .....  | 73        |
|          | Status 20: The file manager is not active .....                                  | 73        |
|          | Status 81: A lock error was encountered .....                                    | 73        |
|          | Status 85: The file is locked .....  | 73        |
|          | Status 88: The application encountered an incompatible mode error .....          | 73        |
|          | Status 161: The Zen database has not been activated. ....                        | 73        |
| <b>6</b> | <b>Manage licenses.....</b>  | <b>75</b> |
| <b>7</b> | <b>Annex .....</b>   | <b>77</b> |
| 7.1      | Description of the control file for installing and uninstalling ORTIMnotes ..... | 77        |

|     |  |    |
|-----|--|----|
|     | Setup .....  | 77 |
|     | License .....  | 78 |
|     | Pages .....  | 78 |
|     | Service .....  | 79 |
|     | ProgramDir .....   | 80 |
|     | DataDir .....  | 80 |
|     | Components .....   | 81 |
|     | LanguagePacks .....  | 82 |
|     | Language .....   | 82 |
|     | Shortcuts .....  | 82 |
|     | SoftwareUpdate .....                                       | 84 |
|     | PSQL .....   | 84 |
|     | Uninstall .....  | 85 |
|     | System variables .....                                     | 85 |
|     | %PROGRAMFILES% .....                                       | 85 |
|     | %SYSTEMROOT% .....   | 85 |
|     | %PROGRAMDIR% .....   | 86 |
|     | Return values of the setup and uninstall program .....     | 86 |
|     | Example .....  | 87 |
| 7.2 | Description of the program control file .....              | 90 |
|     | Directory .....  | 90 |
|     | User .....   | 90 |
|     | AppDataDirectory .....                                     | 90 |
|     | Settings .....   | 90 |
|     | User .....   | 91 |
|     | UserManager .....  | 91 |
|     | Logging .....  | 91 |
|     | OpenSSL .....  | 91 |
|     | ImageLibrary .....   | 92 |
|     | Setup the application data directory .....                 | 92 |
|     | Example .....  | 92 |
|     | Setup the minimum password length .....                    | 93 |
|     | Example .....  | 93 |
|     | Enable logging .....                                       | 93 |
|     | Example .....  | 93 |
| 7.3 | Description of the control file for the Zen database ..... | 94 |
|     | Control file BTRIEVE.INI .....                             | 94 |

|   |            |
|---|------------|
| Btrieve Server .....  | 94         |
| Object Converter .....  | 94         |
| Btrieve Client .....  | 95         |
| The following options are not necessary for PSQL versions greater 9 ..... | 97         |
| 7.4 How does the license file work? .....                                 | 99         |
| 7.5 Control of automatic activation .....                                 | 99         |
| 7.6 License file status messages .....                                    | 100        |
| <b>License agreement .....</b>  | <b>101</b> |
| IconExperience .....  | 104        |
| License Agreement .....   | 104        |
| FreelImage .....  | 105        |
| License Agreement .....   | 105        |
| OpenSSL License .....   | 111        |
| Patent License for OpenSSL .....  | 111        |
| Apache License .....  | 113        |
| zlib .....  | 118        |
| License Agreement .....   | 118        |
| 7-Zip .....   | 119        |
| 7-Zip License .....   | 119        |
| GNU LGPL information .....  | 119        |
| BSD 3-clause License .....  | 120        |
| unRAR license restriction .....   | 120        |
| <b>Index .....</b>  | <b>1</b>   |



## 1.1 System requirements

To run ORTIMnotes, you require a standard PC or a virtual machine. The main memory (RAM) the program requires depends on the operating system you use (see below).

The program runs under the Microsoft operating systems Windows 8.1 or newer.

The program also runs on the Server versions Windows Server 2012 R2 or newer.

You also require a VGA compatible graphics card with a minimum resolution of 800x600 pixels. Higher resolutions are recommended. This significantly enhances the clarity of the window elements.

We also strongly recommend that you use a mouse.

The program must be installed on a hard disk. You require around 100 MB of free memory for the full installation. Another 300 MB of disk space is necessary for the application database.

**Note:** You must have administrator rights and the permission via the user access control facility (UAC) in order to install the program. Accordingly, sign on as an administrator or have the system administrator perform the installation.

## **Microsoft Windows 8.1, Windows 10, Windows 11**

You should have at least 4 GB main memory (RAM) and a dual core CPU.

## **Microsoft Windows Server 2012 R2, Windows Server 2016, Windows Server 2019, Windows Server 2022**

You should have at least 4 GB main memory (RAM) and a quad core CPU.

## 1.2 Data security

The following mechanisms protect your data from unauthorized access:

- Access authorizations
- Encryption
- Access control in a multi-user environment
- Copy protection

### Access authorization

The User Manager allows each license holder to configure the access authorization to suit the particular needs of his organization and delegation structure.

The user is allowed access the program sections he is to work with. The User Manager enables the license holder to deny the user access to program sections he is not allowed to use.

Users are organized in user groups in ORTIMnotes. In each user group, the right access authorizations are defined for their organizational structure.

Always ensure that there is at least one user group with access authorization to all the program sections (with administrator authorization) and that this user group is assigned to at least one user. Otherwise, it may happen that no user at all is authorized to restore access to program sections that have been locked! (in which case, the User Manager has to be re-installed).

When the program is installed, the system administrator (with the name "Abel" and password "a") is configured with access to all the sections of the program. As soon as the User Manager has been adapted to the license holder's particular organization, user "Abel" should be deleted.

### Encryption

All the security-related data ORTIMnotes writes onto the hard disk are automatically encrypted. This ensures that neither the texts nor the time blocks can be read without using the program.

## Access control in the network

If the program is used in a multi-user environment (e.g. network), access to the program data has to be controlled such that no conflicts arise when changes are written.

To achieve this, ORTIMnotes requests a lock from the database for each data record. If the database fails to supply this lock, because the record is being edited by a different user, the data are released for viewing only, meaning that no changes can be made.

If the database succeeds in setting the lock, the user can edit a record in full with all the related components. In this case, all the other users of the program are denied access to the same data.

## 1.3 Copy protection

### Softlock

*Softlock* is the standard program protection for ORTIMnotes.

*Softlock* is bound to a network server.

A detailed description of the Softlock can be found in [chapter \*Softlock\* \(page 73\)](#).

## 1.4 Multitenancy

Software multitenancy is a software architecture in which a single instance of software runs on a server and serves multiple tenants. Systems designed in such manner are "shared" (rather than "dedicated" or "isolated"). A tenant is a group of users who share a common access with specific privileges to the software instance. With a multitenant architecture, a software application is designed to provide every tenant a dedicated share of the instance - including its data, configuration, user management, tenant individual functionality and non-functional properties. Multitenancy contrasts with multi-instance architectures, where separate software instances operate on behalf of different tenants.<sup>1</sup>

ORTIMnotes has many, but not all, of the properties mentioned above.

1. Source is [en.wikipedia.org](http://en.wikipedia.org), Multitenancy

Groups, subgroups and users can be managed via a central user administration. The user management is initially available to all users, but can be reduced to the group of administrators through rights and roles.

The top-level groups - the main groups - offer the possibility to define directories and variables that are effective for all subgroups and users.

All groups (including individual users) can be assigned roles that define access to individual program functions. Rights to data areas can be defined in the same way.

With the directories of the main groups and the data rights, quasi clients can be formed that work on the system at the same time but have no access to the data of the other clients.

Since there is not a strict separation of all system areas, despite the separation of data and authorizations, e.g. central print forms can be set up and used, which makes it easier to maintain the data for an entire group.



To ensure proper installation, we recommend the following system architecture.

## dmc-ortim server

As a rule, installing the database server and the dmc-ortim programs on an existing server does not pose a problem. On account of the substantial system loads that can sometimes occur, however, particularly when using ORTIMnotes the runtime of other software may be affected.

If possible, it is advisable for this reason to use a separate server. We recommend using a virtual server machine with the operating system *Microsoft Windows Server 2012 R2* or newer.

Having plenty of system memory on the dmc-ortim server can improve the Zen database performance significantly. The Zen database server uses 60% (default) of the physically available system memory as level 1 cache. Ideally, a level 1 cache should be the size of your database; the database then works like an in-memory database.

## dmc-ortim terminal server

A terminal server can be configured as a separate server or activated on the dmc-ortim server. We recommend using a terminal server if you are planning a central installation and wish to connect multiple sites. The terminal server should be dimensioned such that it provides sufficient CPU power and system memory for the necessary sessions.

The Zen client installed on the terminal server uses TCP port 3351 to connect to the Zen server.

## dmc-ortim workstation PC

Few requirements apply with regard to the workstation PC. Any commercially available standard PC satisfies the requirements for using the dmc-ortim programs.

The workstation PC can access the dmc-ortim server directly if the PC and the server are in a fast network (at least 100 Mbit).

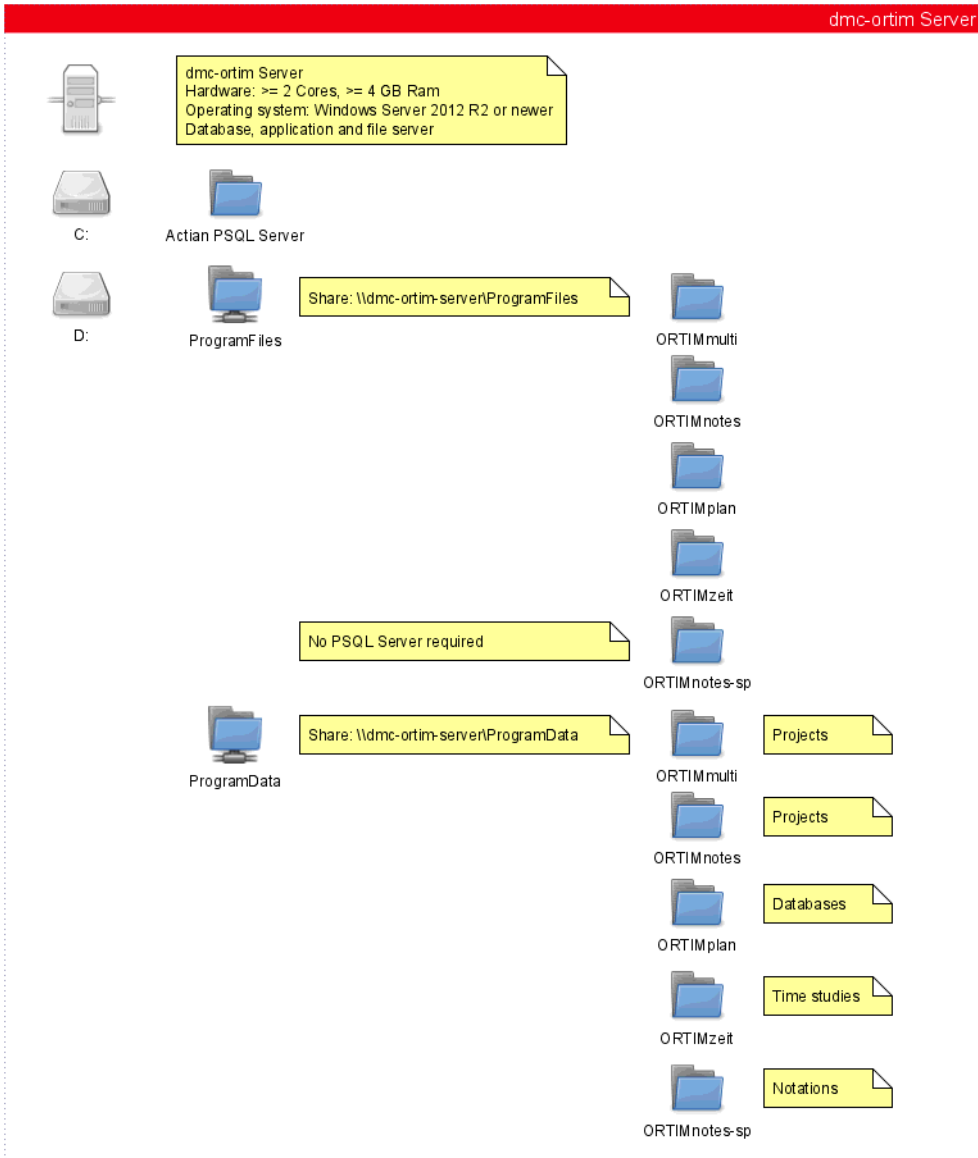
If the workstation PC accesses the dmc-ortim server via a slow connection, it is advisable to configure a terminal server and the workstation PC for this. Only the terminal sessions will then be started on the workstation PC; the program itself runs on the terminal server.

The Zen client installed on the workstation PC uses TCP port 3351 to connect to the Zen server.

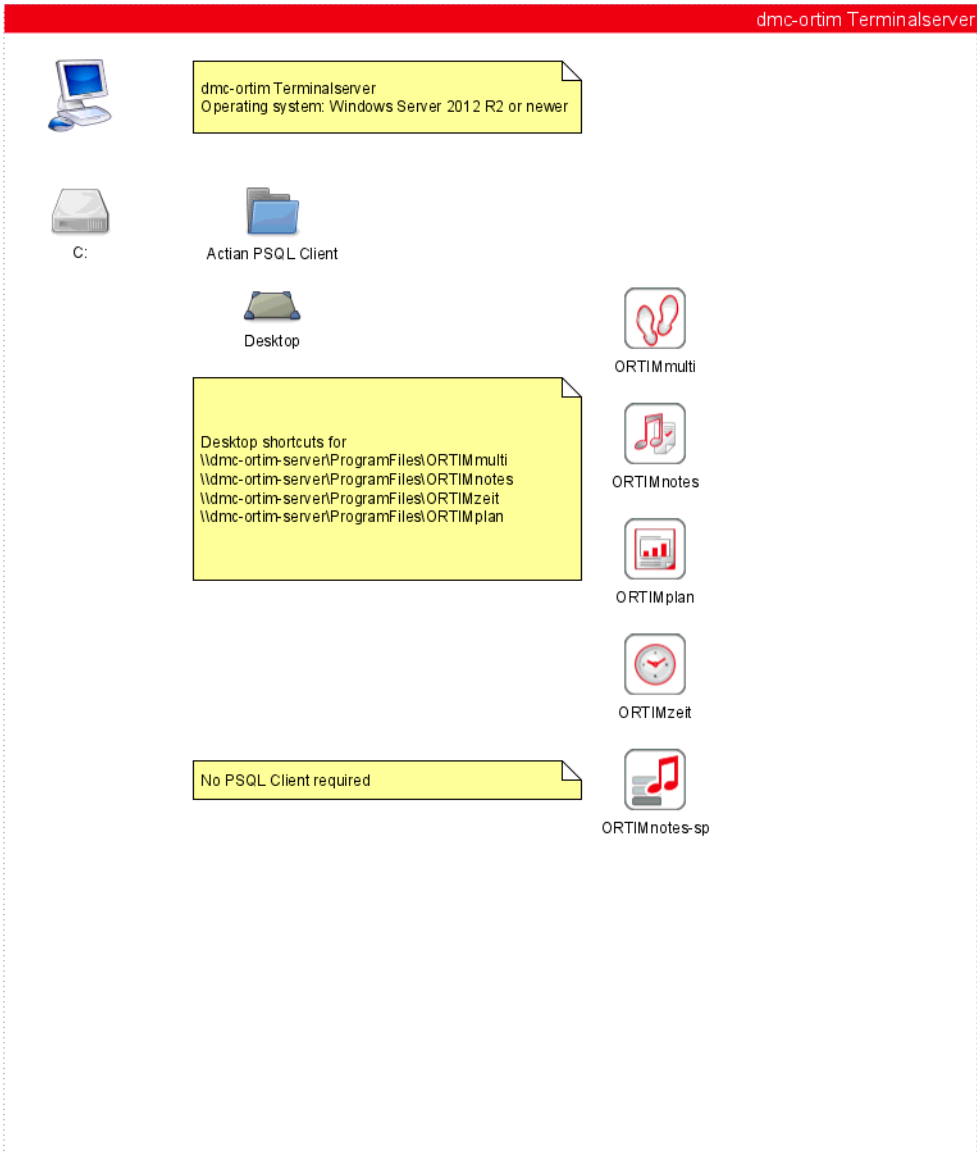
The connection between the workstation PC and ORTIM a5 device is established via TCP port 12555.



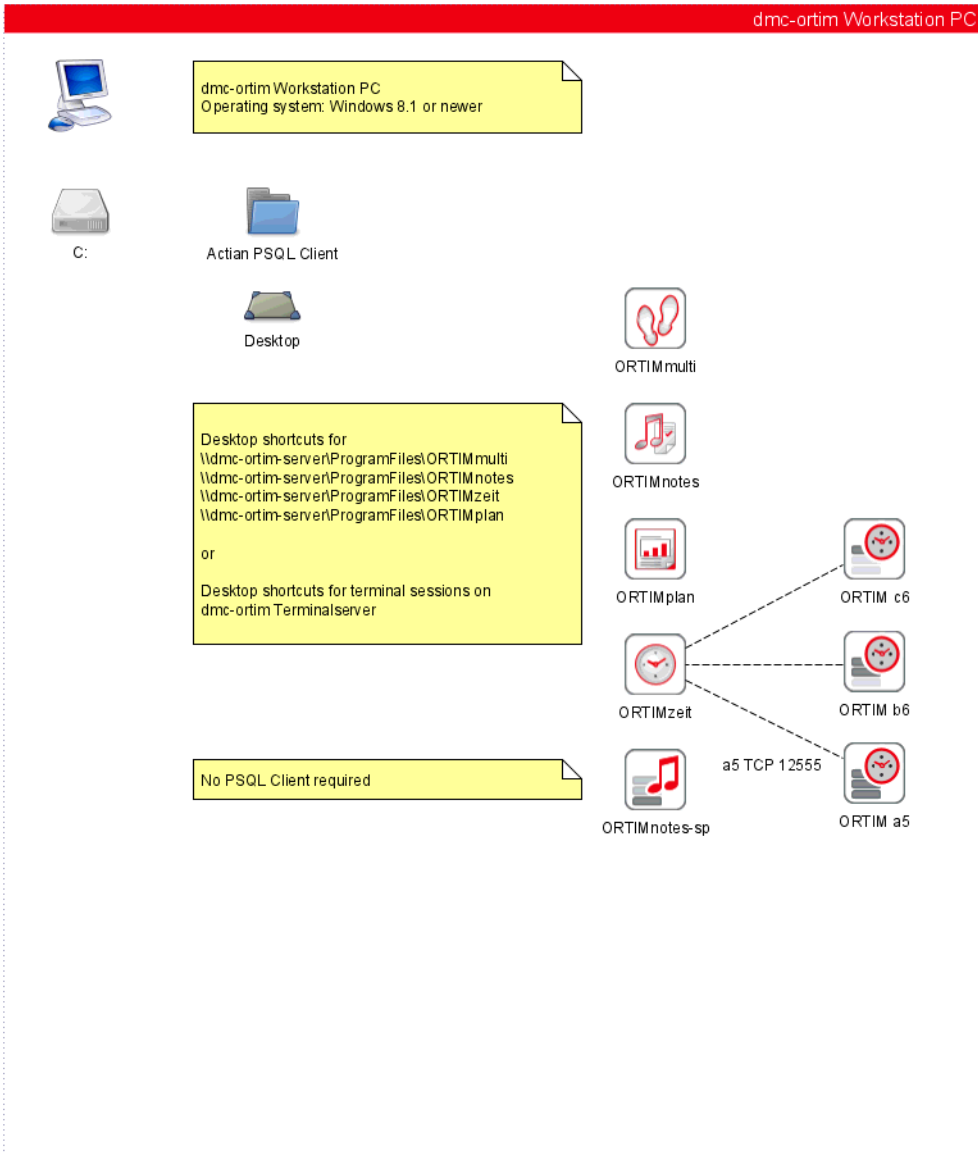
## 2.1 Architecture of the dmc-ortim server



## 2.2 Architecture of the dmc-ortim terminal server



## 2.3 Architecture of the dmc-ortim workstation PC





ORTIMnotes is equipped with a program protection.

The method *Softlock* is a pure software protection method. The software protection method is also referred to below as a license file.

### 3.1 License file (Softlock)

The *license file* consists of a central database in which all the important information is stored.

**The license file is delivered with delivery of the software.**

You will receive a small setup program from dmc-ortim which will install the license file (onlock.btd) in the correct folder (the data directory of ORTIMnotes).

Technical details about the function of the license file can be found in [section \*How does the license file work?\* \(page 99\)](#).

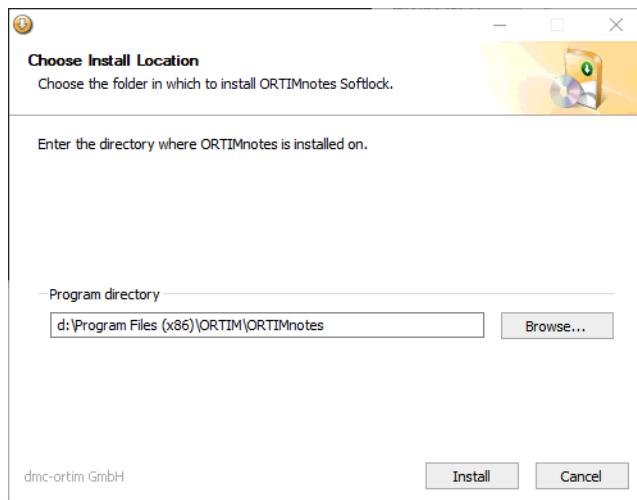
#### Installation of the license (.exe file)

Execute the *License* setup program.

#### Program directory

It is first necessary to choose the ORTIMnotes program directory. The program directory is the directory where the *onotes.exe* file is located.

The directory for the license file is determined via the *control.ini* file. In most cases the data directory of ORTIMnotes is used.



The directory will be defaulted in which ORTIMnotes is already installed when the *Softlock* is installed on the same PC the program has been installed on.

## Installation of the license (.zip file)

If you received a .zip file, you can select it during installation (see below page 49). The license will then be installed.

If you want to renew your license independently of the program installation, unzip Please copy the license file onlock.btd into the data directory of the application.

**Note:** The data directory is the directory in which, among other things, the user database onuser.btd is located.

## Activate license

If you are using the *license* for the first time, it first has to be activated.

**Note:** The *Softlock* is activated for the PC on which ORTIMnotes is installed. If you install ORTIMnotes on a network server, the license will be activated for the network server.

## Automatic activation

When the program is started for the first time, an automatic activation procedure is triggered. This automatic activation takes place via the Internet. This will contact the dmc-ortim activation server.

Here the program version, the serial number and a device code are transmitted to the activation server.

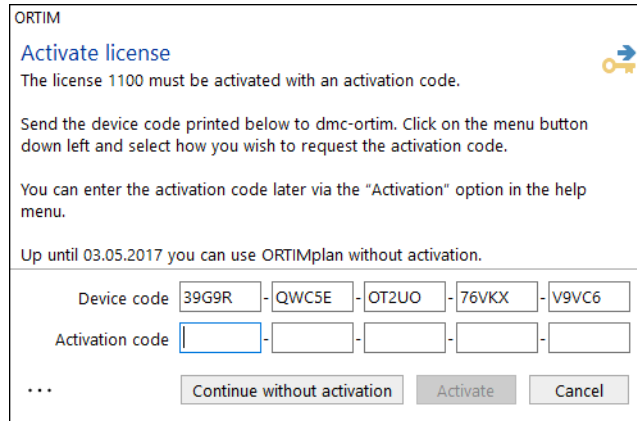
No further data (personal or PC-related data) will be transmitted.

The activation server will provide the activation code and unlock your license for use.

If automatic activation is unsuccessful, you can manually activate the license. The method will be described below.

## Activate license manually

For this purpose, once you have logged in, ORTIMnotes opens a window from which you can read your device code.



ORTIM

### Activate license

The license 1100 must be activated with an activation code.

Send the device code printed below to dmc-ortim. Click on the menu button down left and select how you wish to request the activation code.

You can enter the activation code later via the "Activation" option in the help menu.

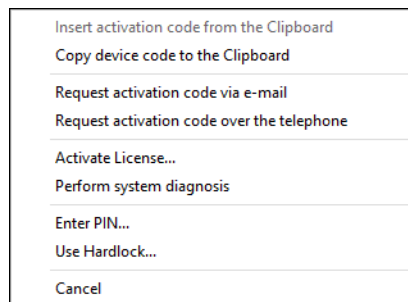
Up until 03.05.2017 you can use ORTIMplan without activation.

Device code: 39G9R - QWC5E - OT2UO - 76VKX - V9VC6

Activation code: [ ] - [ ] - [ ] - [ ] - [ ]

...

You must send the device code to dmc-ortim, who will send you your activation code. Use the menu button (lower left) for this purpose.



- Insert activation code from the Clipboard
- Copy device code to the Clipboard
- Request activation code via e-mail
- Request activation code over the telephone
- Activate License...
- Perform system diagnosis
- Enter PIN...
- Use Hardlock...
- Cancel

You also have the option of requesting the activation code via e-mail or by telephone.

**Note:** Wherever possible, submit your request via the e-mail option.



In order to issue your activation code, dmc-ortim requires the following information:


- The program name,
- the program version,
- the licensee,
- Your serial number,
- Your device code

**The activation code will be sent to you as soon as possible.**

You can also use the program even before you have received your activation code. To do this, select the *Continue without activation* button.

Enter your activation code once you have received it. To assist you with this task, the Help menu contains an option entitled *Activation*. This option is only visible if the *license* has not been activated.

ORTIM

**Activate license** 

The license 1100 must be activated with an activation code.

Send the device code printed below to dmc-ortim. Click on the menu button down left and select how you wish to request the activation code.

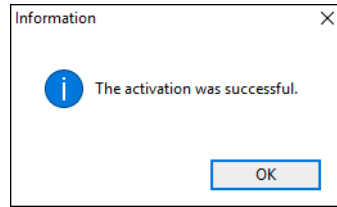
Device code  -  -  -  -

Activation code  -  -  -  -

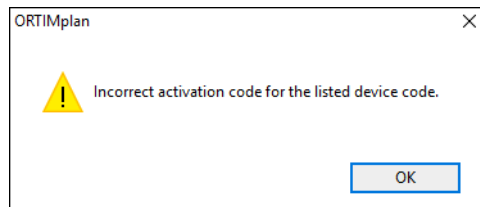
...

Enter your activation code in the five input boxes. Once you have entered the complete code, the *Activate* button will be enabled. Select the *Activate* button to activate your license.

If the activation code is correct, a message will appear informing you that the *license* has been successfully activated.



If you receive a message informing you that the activation was not successful, check your entry.



If the *license* has been successfully activated, the activation window will no longer appear after you have logged on. If you have launched the program without having activated the Softlock, the *license* activation window will appear again each time after logging in.

In this case, you can continue to use the program without having activated the license for a temporary period.

## Deactivate the license

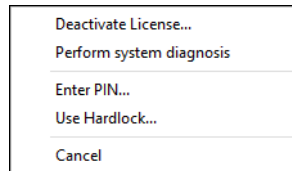
The license is bound to your PC or server.

**Note:** You must deactivate your license if you want to run ORTIMnotes on another PC or server.

If the license is deactivated, you can perform the automatic license activation on the new PC or server. If you do not disable the license, automatic activation on a new system is not possible.

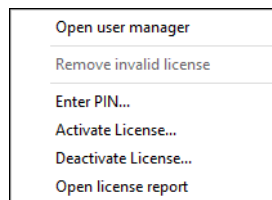
### Disable license via the help menu

- Open the Help menu and select License ...
- The following window will show that your license is activated.
- At the bottom left press ... and select *Deactivate license...*



### Disable license via the system administration

- Open the system administration and switch to the *License* area.
- It will show that your license is activated.
- Open the local menu (context menu) and select the *Deactivate license...* entry.



To deactivate the license, you need the *Deactivate License* right in your user role. Then confirm the consultation to deactivate your license.

## Entering a PIN code

If you received a PIN code for a special solution, enter it as follows:

- Choose the menu *Help* and item *Activation...*
- Click menu button ... in the activation window.
- Select item *Enter PIN...*
- Enter the PIN code or delete and existing PIN code.

or

- Open the system manager.
- Choose the category *License*. The right side of the window will display notes about the license.
- Open the local menu (context menu) and select *Enter PIN..*
- Enter the PIN code or delete and existing PIN code.

After that the program must be restarted.

The about dialog (main window, menu *Help, Info*) prints out notes about the special solution.

## License monitor

The *License monitor* is part of the system management.

If your attempt to sign into the license fails, the license monitor will be opened. This monitoring program allows you to view all the locks and all the users signed in. The license monitor allows an administrator to release licenses (e.g. if the program has not been shut down properly on a particular workstation).

|                    |                                      |                      |                  |         |              |
|--------------------|--------------------------------------|----------------------|------------------|---------|--------------|
| Licensee           | XXXXXXXXXXXX                         |                      |                  |         |              |
| Serial number      | 1100                                 |                      |                  |         |              |
| Device code        | 39G9R-QWC5E-OT2UO-76VKX-V9VC6        |                      |                  |         |              |
| Activation code    | FB8AB-4UA7J-KVBGH-Y3ANN-IFKRZ        |                      |                  |         |              |
| Valid              | 248 Day(s), 28.04.2017 to 31.12.2017 |                      |                  |         |              |
|                    | Still 247 days valid                 |                      |                  |         |              |
| Number of licences | 4                                    |                      |                  |         |              |
| Serial number      | Logged in                            | Status               | Login time       | PC name | PC user      |
| 110000             | admintl                              | logged in on this PC | 28.04.2017 09:44 | TL      | XXXXXXXXXXXX |
| 110001             |                                      |                      |                  |         |              |
| 110001             |                                      |                      |                  |         |              |
| 110099             |                                      |                      |                  |         |              |

The license monitor can also be started as a separate program, without a user signing in at the Softlock. This is done using the *License monitor* option in the Start menu on your PC. This launches ORTIMnotes with command line option `/m`.

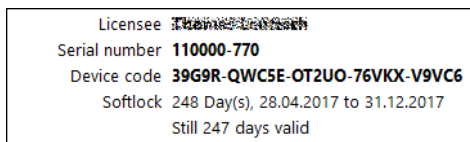
If the program is launched with option `/m`, no other functions of ORTIMnotes will be available. After closing the license monitor, the program will be shut down automatically without requesting confirmation.

It is only possible to use the License monitor as a separate program if ORTIMnotes is not already running.

## Validity period of the license

The License restricts the use of the program to a specific period (e.g. 180 days).

The license period of validity is displayed in the information dialog window of ORTIMnotes.



ORTIMnotes issues a warning in good time that the validity of the license is due to expire, reminding you that you need to request an update for the data from dmc-ortim.

## Status messages

Possible problems are described in [section \*License file status messages\* \(page 100\)](#).

## 4.1 Preparing the installation

A number of directories are configured during the installation of ORTIMnotes.

**Note:** You must have administrator rights in order to install ORTIMnotes. Accordingly, sign on as an administrator or have the system administrator perform the installation.

The setup program configures files in various directories.

### Program directory

The program files that cannot be modified are stored in the program directory. To work with the program, the PC standard rights of the group "User" are sufficient.

**Note:** The program directory does not need to be included in a data backup.

### Data directory

The data directory is used for storing all the program files that can be modified. For this directory, PC write access is required. The setup program attempts to set the rights.

On PC systems with special restrictions (group guidelines) or in network directories, setting the rights may not work sometimes. In this case, the system administrator has to assign the rights for the data directory and all the sub-directories manually.

It is essential to include the data directory in the data backup routine.

## Zen working directory

The Zen working directory is required for the correct functioning of the database used by ORTIMnotes. The directory must be located on the workstation PC - not in the network. For this directory, PC write access is required. The setup program attempts to set the rights (for further information, refer to data directory).

It is not necessary to include the Zen working directory in a data backup routine.

## Configuring directories on PC or notebook PC

If you install ORTIMnotes on either a PC or notebook PC, the following directory structure is useful.

### Program directory

Use the directory used on your PC for installing programs.

**Example:** C:\Program Files\ORTIMnotes

### Data directory

Specify a directory with write permissions.

**Example:** C:\Program Files\ORTIMnotes

### Zen working directory

Specify a directory with write permissions.

**Example:** C:\Windows\temp

## Configuring directories on a network server

If you install ORTIMnotes on a network server, the following directory structure is useful.

### Program directory

Using a network drive of your server with the name **\\ServerName**, create a directory called **ProgramFiles** for the installation of programs. Configure a release **ProgramFiles** for this directory. Under **ProgramFiles**, create the directories **ORTIM** and **ORTIMnotes**. Then specify **\\ServerName\ProgramFiles\ORTIM\ ORTIMnotes** as the program directory.



## Data directory

Using a network drive of your server with the name **\\ServerName**, create a directory called **ProgramData** for storing program data. Assign write permissions to this directory. Configure a release **ProgramData** for this directory. The release must also have write permissions. Under **ProgramData**, create the directories **ORTIM** and **ORTIMnotes**. Then specify **\\ServerName\ProgramData\ORTIM\ORTIMnotes** as the program directory.

**Note:** We strongly advise that you specify a UNC path name here.

## 4.2 Full Installation

### Full Installation

The ORTIMnotes program is supplied in the dmc-ortim Download Center. Download the file *setup\_ortimnotes.exe* and run the installation.

The program cannot be used without a license.

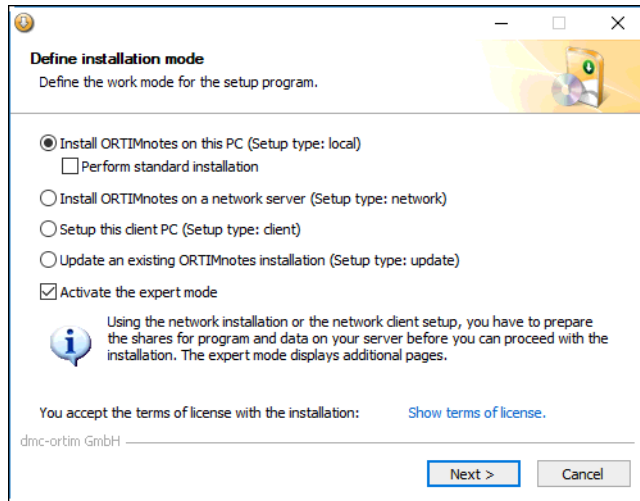
This will launch the setup program and you will be guided through the various steps of the installation. It is advisable to read all the information carefully that appears during the installation process.

### Start the full installation, Choose Installation Mode

The Setup Wizard will guide you through all the necessary installation steps.

**Note:** You accept the terms of license with the installation. Read the license terms carefully before starting the installation.

This window allows you to define how the installation is to be performed.



## Install ORTIMnotes on this PC

Setup type: local.

Choose this install mode if you want to install ORTIMnotes on the PC, you are currently logged on to.

**Note:** The database Zen Workgroup, which is included in the setup program, will be installed on the PC.

### Perform standard installation

If this option is checked, the installation runs with the default values. The setup program uses the Microsoft standard directories for program and data. Only a page to determine the program protection will be opened.

## Install ORTIMnotes on a network server

Setup type: network.

Choose this install mode, if you want to install ORTIMnotes on a network server. The setup can be performed either on the network server itself (recommended) or on a client PC. If you want to run ORTIMnotes on the network server (e.g. as service to perform central tasks), you must run the installation on the network server.

Before you start the setup procedure, you must create the directories for program and data and the network shares.

**Note:** The database Zen server must be installed on the network server prio to the installation of ORTIMnotes.

**Note:** The Zen database server is not part of the ORTIMnotes installation. The database server is placed on the program cd in folder \PSQL or can be downloaded from the dmc-ortim Internet:

<https://downloadcenter-ortim.dmc-group.com/dmc-ortim/softwareproduct/actian-psql>

### Example:

Install the program on the network server with PC name ORTIM on drive F.

Create the directories

F:\ProgramFiles\ORTIMnotes

F:\ProgramData\ORTIMnotes

Create the network shares

\\ORTIM\ProgramFiles

\\ORTIM\ProgramData

During the installation enter the program directory

\\ORTIM\ProgramFiles\ORTIMnotes

and the data directory

\\ORTIM\ProgramData\ORTIMnotes

**Note:** We strongly advise you to specify a UNC path to the data directory, since this is unique. Drive letters can refer to various PCs and different directories.

## Setup client PC

Choose this install mode, if ORTIMnotes ist already installed on a network server and you want to setup a client PC.

**Note:** The database client program (Zen Client or SQL Workgroup) must be installed on the client PC prio to the ORTIMnotes installation.

## Update existing ORTIMnotes installation

Use this install type to update/upgrade an existing ORTIMnotes installation.

The installation will update all program and example file.

**Note:** Do not place your own data or test data in the example databases.

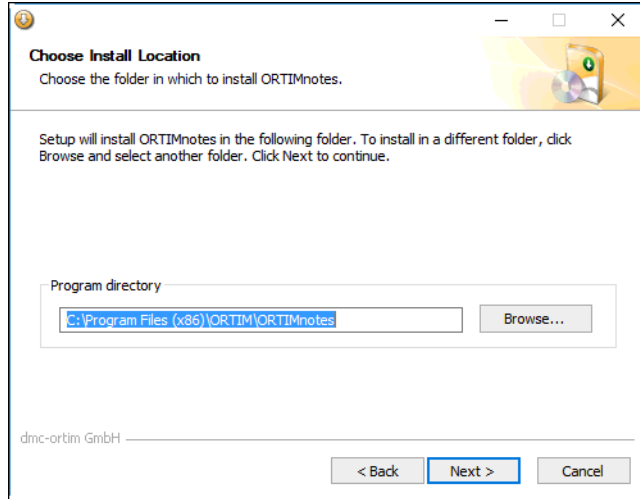
## Expert mode

If you choose expert mode, additional settings pages will be opened during the course of the installation.

**Note:** You should only use expert mode if you, for example, plan to configure a second installation on the same PC or server.

## Choose program directory

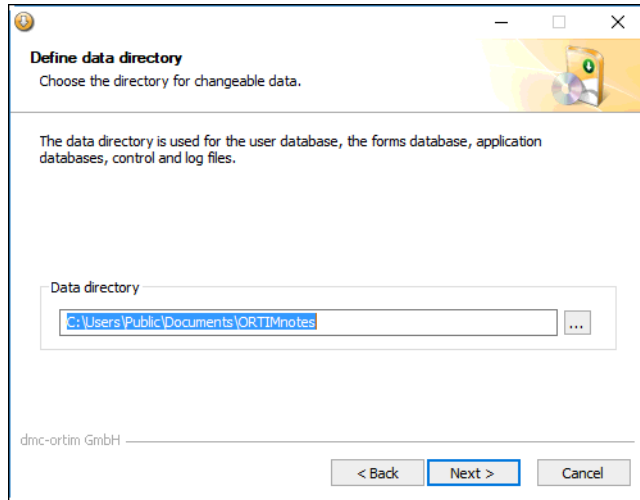
In the next step, you will be requested to specify a directory into which ORTIMnotes is to be installed.



By default, the directory "C:\Program Files (x86)\ORTIM\ORTIMnotes" is used. If you wish to use a different directory, you can select the directory you require using the "Browse..." button or by entering it directly in the input box.

## Choose the data directory

Choose the data directory.

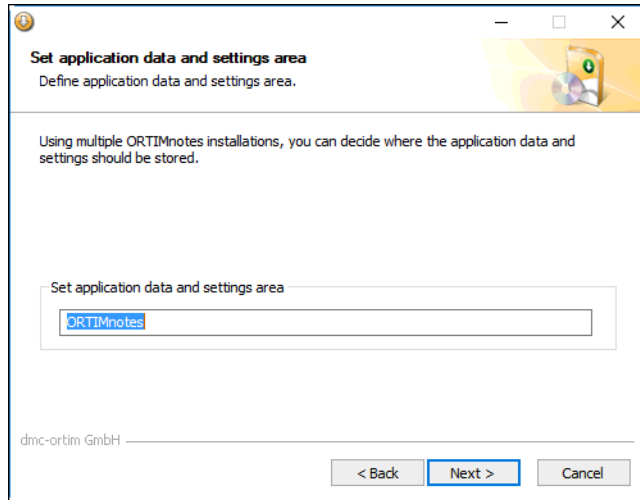


If you use the program in a network, choose a directory that is available to all users in the network and to which all the users have the necessary write permissions.

**Note:** We strongly advise you to specify a UNC path to the data directory, since this is unique. Drive letters can refer to various PCs and different directories.

## Choose application and settings area

This screen only appears in expert mode.



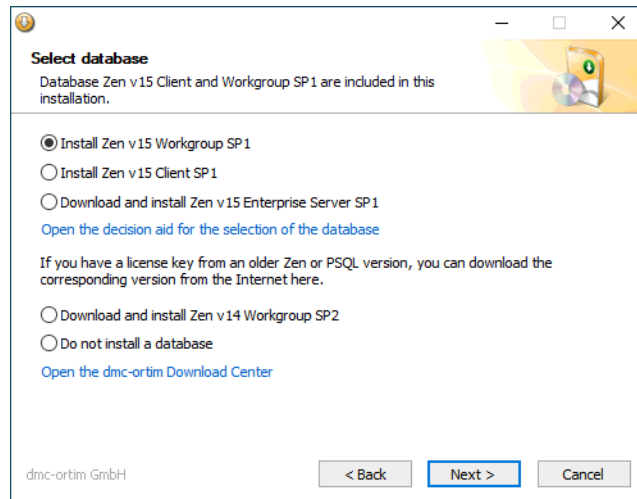
This dialog allows you to enter a key for the application data and the workstation settings. If you plan to configure a second ORTIMnotes installation on the same PC or server, you need to enter a unique key here.

The application data are stored under the specified key in the directory, which is the current value of the system variable %APPDATA%.

The workstation settings are stored under the specified key in the registry path *HKCU\Software\ORTIM Industrial Engineering Deutschland GmbH* within the PC.



## Select database



The **Action Zen v15 Workgroup** database is **integrated into the installation**.

If you want to use Action PSQL v14 Workgroup, you need a license for this version.

**Licenses are not transferable between versions.**

At the end of the installation, you can enter your license in the *License Administrator* and activate the database.

### Decision support for the selection of the database

Select the database based on the following criteria.

#### Workgroup

- When you install the application on this PC.
- If the application is installed on a central server and you also work with data on this PC.
- If you want to use the ORTIM a6 for Windows application on this PC.

#### Client

- When you set up a network workstation.

#### Server (Enterprise Server)

- If you carry out the installation on a central Windows server to which several PCs are connected.

The server is offered in two versions. The server that can be selected here is the Enterprise Server. You can get the cloud server from the dmc-ortim Download Center.

**Enterprise Server:** suitable for use on physical hardware and in a virtual machine (no load distribution possible).

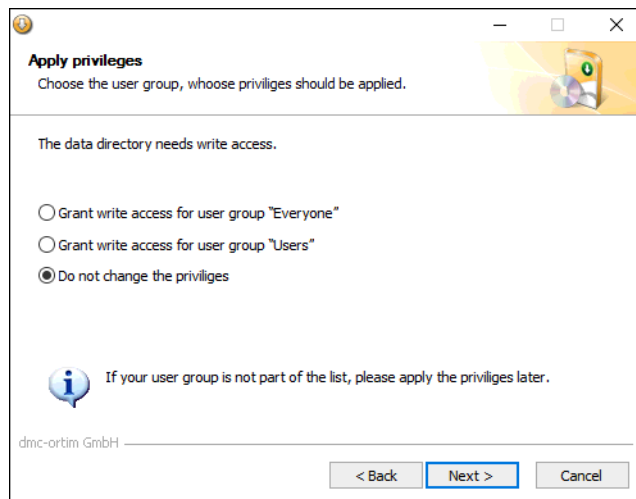
User-dependent license model.

**Cloud server:** suitable for use in a virtual machine on a host with load distribution.

Data volume-dependent license model.

## Apply privileges

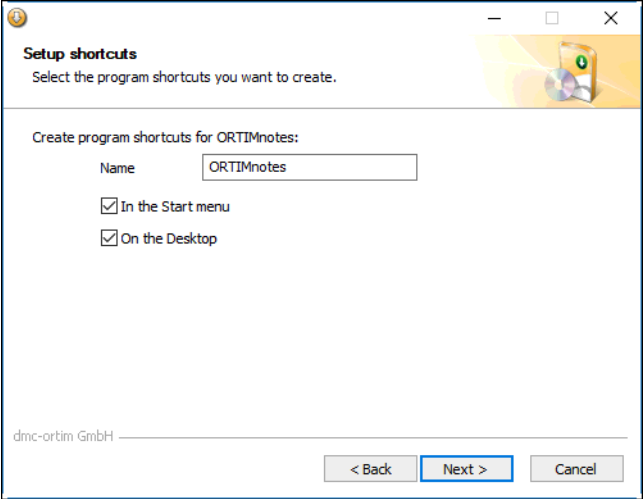
This screen only appears in expert mode.



Select the PC privilege group you want to assign to the data directory.

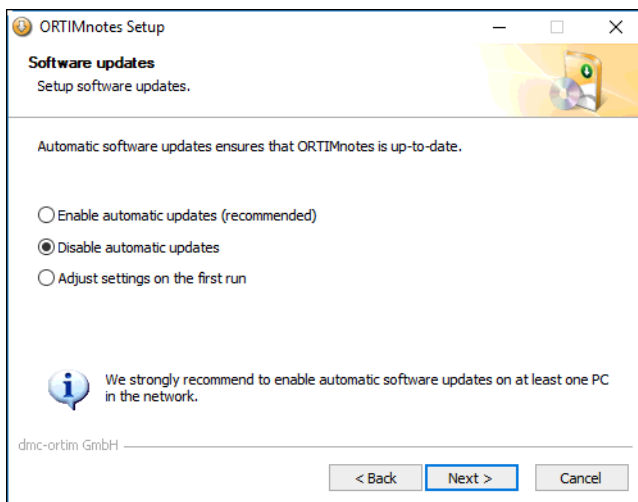
# Setup shortcuts

On this page you can decide, where the program shortcuts are created. The shortcuts are created with the name entered in the entry field.



## Software updates

This window only appears in expert mode.



ORTIMnotes offers the option of downloading program updates from the Internet (Software Update) and of modifying the program while it is running. This allows problems to be solved quickly and easily.

This screen allows you to define the settings for the Software Update functionality.

If you select the default "Define settings on first program start", a window will be opened when the program is started for the first time, which allows you to define the behavior of the software update functionality in detail.

Here (during the setup procedure), you can define the basic setting governing whether automatic updates are performed or not. If, for instance, you do not have access to the Internet, or you do not wish to permit the users of ORTIMnotes to have access to the Internet, you should select option "Disable automatic updates".

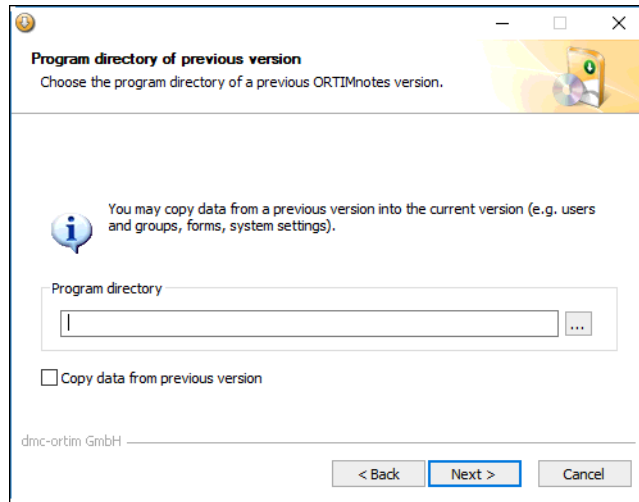
You can change these settings again later via the program.

**Note:** We strongly advise that you enable automatic software updates on at least one PC, such that any updates provided are downloaded.

Administrators can also access the Software Update function via the command line. Further information is available in the annex to the user manual "Basics" (command line).

## Copy data from previous version

This screen only appears in expert mode.



If you run a full installation, you can copy files of a previous version to the current version. Enter the program directory of the previous version and check the button „Copy data from previous version“.

**Note:** A backup of the overwritten files is created with extension \*.700 (the extension depends on the currently installed program version).

The following files are copied:

1. User database
2. Forms database
3. Task database
4. Analysis systems
5. Time category modules

## Choose license

The page is displayed for installations on a workstation PC and on a network server open. For update installations, the page is only opened in expert mode.

Via the license page you can select the license zip file provided by dmc-ortim. The license is installed in the data directory during the program installation.



The license zip file can be entered in the installation control file ([see below, page 77](#)).

### Example

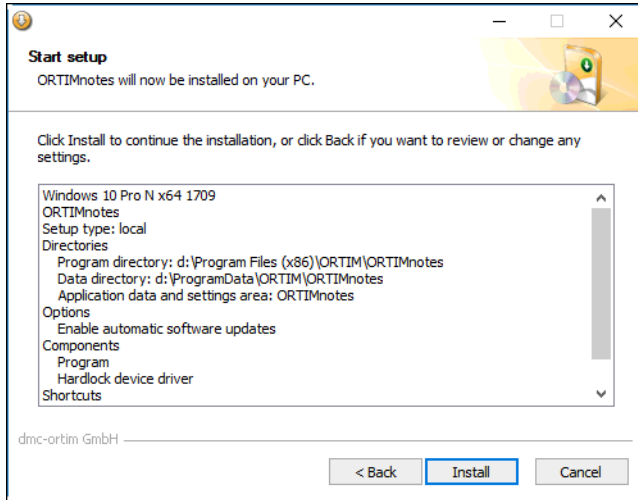
[License]

Path=%DESKTOP%\dmc-ortim-license.zip

## Start setup

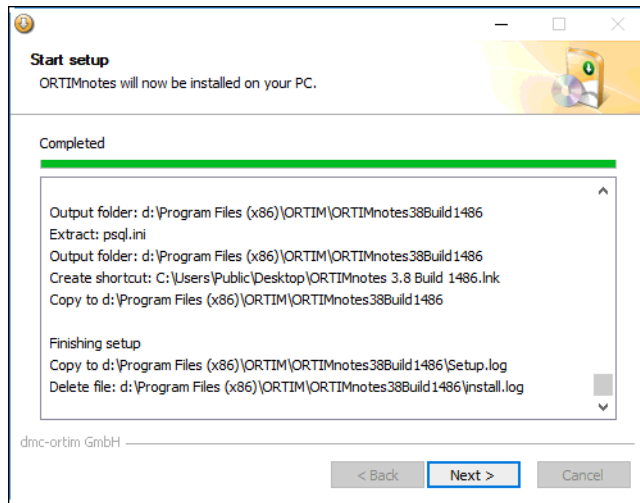
The overview page prints the installation steps you can expect to see.

You now launch the setup procedure by clicking on the “Install” button. All the necessary files are copied into the previously defined directories.

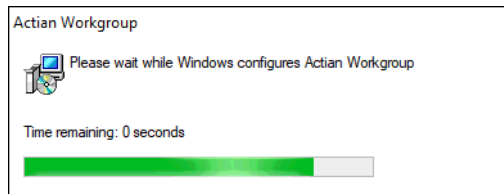


## Installation progress

The progress of the setup procedure is now depicted by means a progress indicator. During the installation, the "Next >" button is not available. Once all the files have been copied onto the system, the "Next >" button becomes available again and shows you that the setup has been completed.

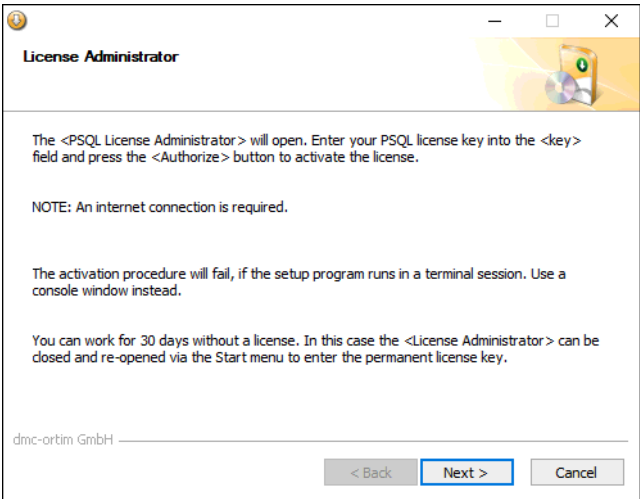


During the installation procedure, a window is displayed if you do not have installed the Zen database.

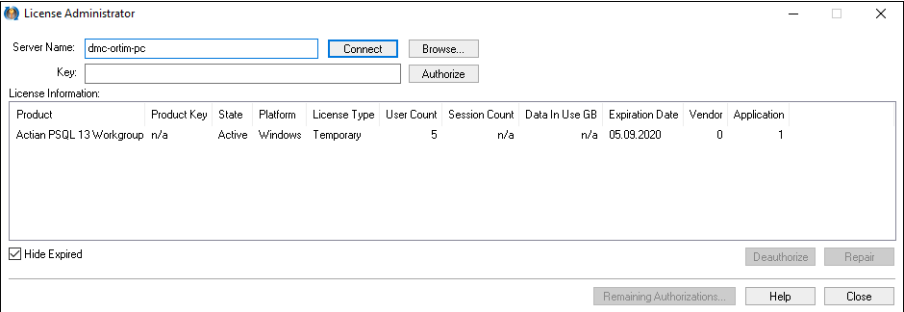




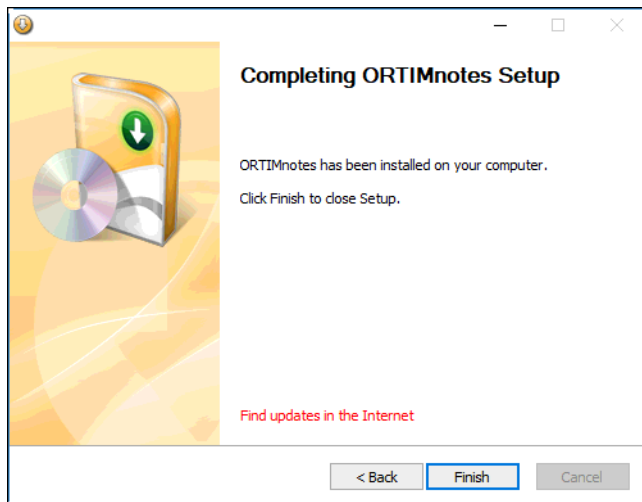
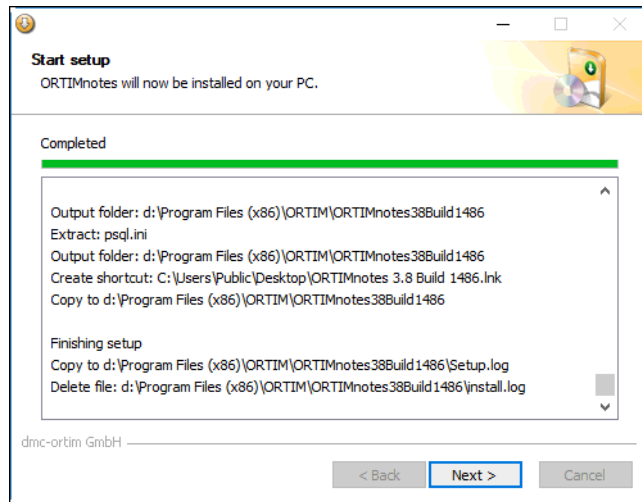
After installing the database system a message box with useful tips about entering the database license is opened.



After that the license manager window is opened.



## Completion of the installation procedure



## Load software updates

ORTIMnotes is regularly supplemented by software updates. With software updates problems are eliminated that ORTIMnotes users have sent to dmc-ortim.

**Note:** Use the link on the last page of the installation wizard (*Find updates in the Internet*) to find software updates directly after the installation. Download the installer for software updates and install the updates.

Click on the *Finish* button to conclude the setup.

The program has now been installed.

You may have to restart the PC after the installation. You will then be informed accordingly.

**Note:** If you have installed the program on a network server, it is necessary to perform the network workstation installation on each workstation in order to configure the workstations. During this process, the settings of the Zen database used by the program are adjusted correctly and a program icon is created.

## 4.3 Launching the program

ORTIMnotes is supplied with the *Softlock* program protection.

You will receive a license file from dmc-ortim, which you must install. The license must be activated. After starting the program, ORTIMnotes tries to establish a connection to the dmc-ortim activation server via the Internet. If successful, the license is activated permanently. If a connection cannot be established (e.g. because a firewall prevents this), you can also activate it manually. For details, see below [section \*Activate Softlock\* \(page 45\)](#).

When installing for the first time, the license data for the *Softlock* program protection are installed automatically with the program from the program CD. If you renew the program protection later, you will receive a license file on a data medium or from the Internet. You need to run this file to renew or change the license.

## Softlock

dmc-ortim supplies the *Softlock* on a license CD or via e-mail in addition to the program CD.

### Install Softlock

The license CD contains an executable file (EXE file). Insert the CD into your CD drive and launch the Explorer on your PC. Use the Explorer to access the CD drive and execute the EXE file by double-clicking on it with the mouse.

A detailed description of the Softlock can be found in [chapter \*Softlock\* \(page 73\)](#).

### Activate Softlock

After launching the program, a window appears in which you are prompted to activate the Softlock.

Send the device code to dmc-ortim and subsequently enter the activation code you receive from dmc-ortim in the five input boxes.

If you install ORTIMnotes at a time when the dmc-ortim hotline is not manned (e.g. at night, at the weekend), you can also use the program for a short time without activation. To do this, select button "Continue without activation".

When you next start the program, you will be reminded to enter the necessary activation code.

ORTIM

**Activate license**

The license 1100 must be activated with an activation code.

Send the device code printed below to dmc-ortim. Click on the menu button down left and select how you wish to request the activation code.

You can enter the activation code later via the "Activation" option in the help menu.

Up until 03.05.2017 you can use ORTIMplan without activation.

Device code 39G9R - QWC5E - OT2UO - 76VKX - V9VC6

Activation code  -  -  -  -

...

## 4.4 Starting the program

When you start the program for the first time on your PC, you will be prompted to select the program language. Immediately after launching the program, the login window is displayed.

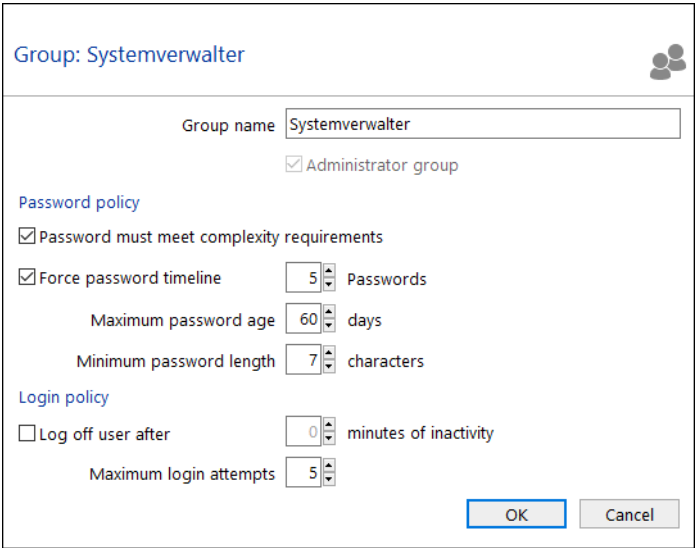
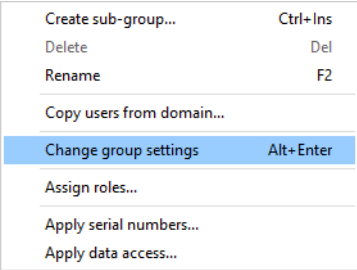
**Log in here with the username "Abel" and password "a".**

After successfully logging in, you will be prompted to change the password, since it does not comply with the security requirements.

Enter a new password twice. The new password must be at least seven characters long and comprise uppercase and lowercase characters, numbers and special characters.

**Remember the new Administrator password.**

The password rules are defined for the user group in the User Manager, where you can configure your own security settings.



**Note:** For security reasons, it is advisable to create your own Administrator user and to delete the predefined user "Abel" afterwards.

## 4.5 Assign serial numbers

If you use the Softlock program protection and you have received more than one serial number with your license, you need to divide up the serial numbers among your user groups. To do this, open the User Manager via Users and Groups in the ORTIMnotes main window. Select all the user groups one after the other and open the entry "Assign serial numbers" via the local menu.

All the available serial numbers are displayed in a list. Select the serial numbers whose program modules (described in the ORTIMnotes scope of delivery) match the chosen user group.

Further information can be found in [chapter \*Manage licenses\* \(page 75\)](#).



## Problems on program startup

If the program generates error messages during the startup phase, this can be due to one of a number of reasons:

- insufficient PC user permissions
- inadequate settings for Btrieve Workstation Engine
- database problems

### PC user permissions

Ensure that you have write access for the following directories:

- Data directory and all sub-directories,
- directory in which your application database is located.

### Zen settings

The possible problems associated with the Zen database are described in a later section, namely [section \*Database status messages\* \(page 73\)](#).

### Database problems

If the program generates an error message after logging on, problems with the application database are possibly to blame for this. If this happens, press and hold down the CTRL key after logging on. This will stop the application database from being opened automatically. You can then open the database manually. At the same time, additional checks are performed that help you narrow down the cause of the error.

### Diagnosis and log file

If you are unable to resolve the problems using the method described above, you can perform a diagnosis of possible errors by selecting the command line option `"/diag"`. If this diagnosis fails to resolve the problem, you can resort to the command line option `"/diagnobtrieve"`. The result of this diagnosis is displayed in a window, which allows you to either save the diagnosis file or send it as an e-mail to dmc-ortim.

The command line option `"/log"` opens a window, which allows you to either save the log file generated by the program to a different location or send it as an e-mail to dmc-ortim.

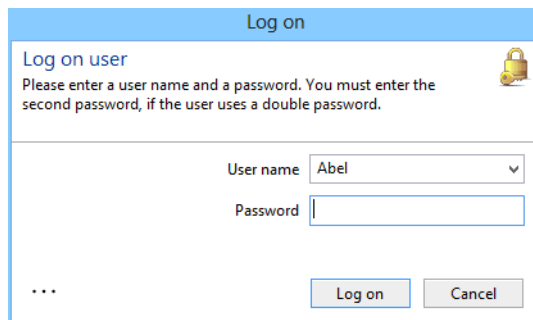
The command line option `"/update"` allows you to download the latest modifications and updates from the Internet in order to eliminate possible problems.

The command line option `"/?"` displays an overview of additional options.

**Note:** To launch ORTIMnotes with a command line option, it is possible to copy and edit the shortcut and enter the corresponding character string behind the file name `Onotes.exe`. Another option is to launch the program with the command line from the command prompt or to select `"Run"` from the Start menu on your PC.

## Login user

Before you start working with the program, you need to log into the ORTIMnotes User Manager.



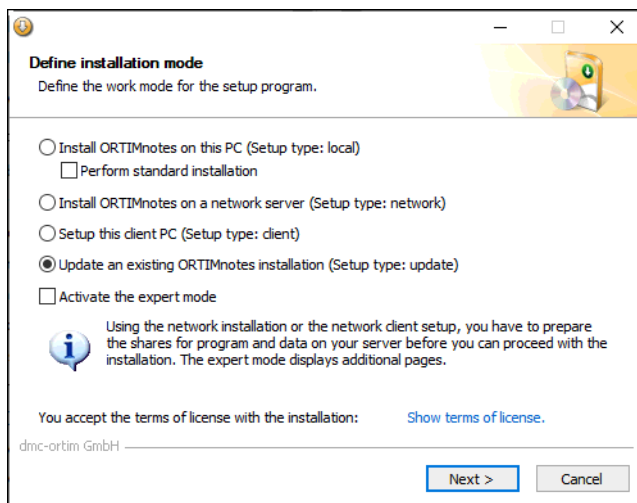
The screenshot shows a 'Log on' dialog box with a blue title bar. The main text reads 'Log on user' followed by instructions: 'Please enter a user name and a password. You must enter the second password, if the user uses a double password.' A yellow padlock icon is on the right. Below the text are two input fields: 'User name' with a dropdown menu showing 'Abel' and 'Password' with an empty text box. At the bottom are three buttons: an ellipsis '...', 'Log on', and 'Cancel'.

Enter **Abel** as your username, and **a** as your password in order to start the program for the first time. Once you have familiarized yourself with the way the User Manager works, you should create a new ORTIMnotes system administrator and delete the preset user *Abel*.

## 4.6 Update installation

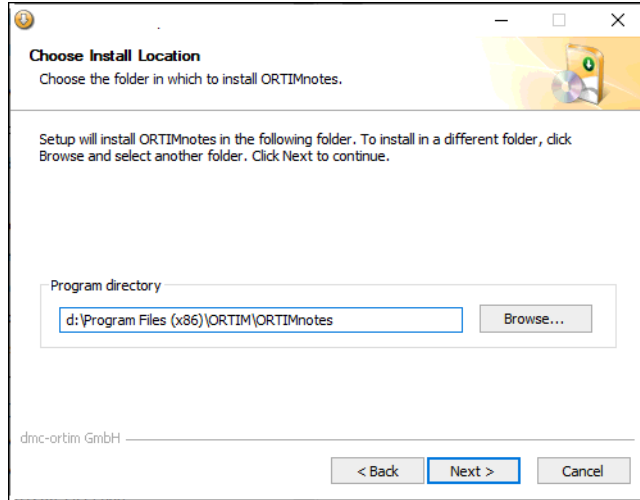
Setup type: update.

Choose install type *Update existing ORTIMnotes installation* to run the update/upgrade.



## Choose install location

You will first be prompted to specify the program directory. Specify the ORTIMnotes program directory.



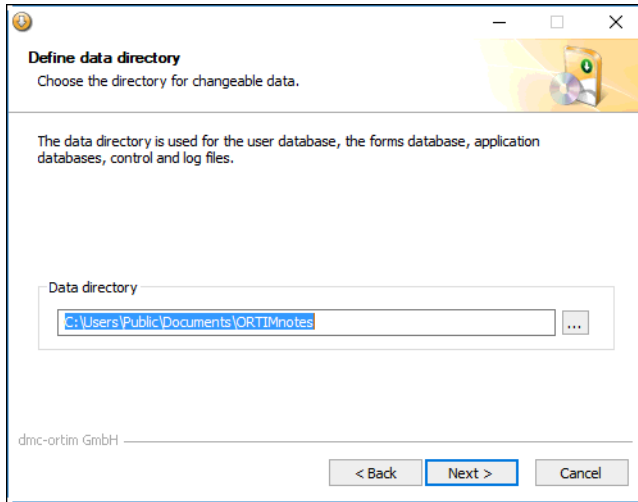
The program directory is the directory that contains the ORTIMnotes installation that you wish to update with the update.

If you have not yet installed ORTIMnotes on your system or if you have specified the wrong program directory, the *Next* button will not be available.

Click on *Next* to proceed with the update.

## Check the data directory

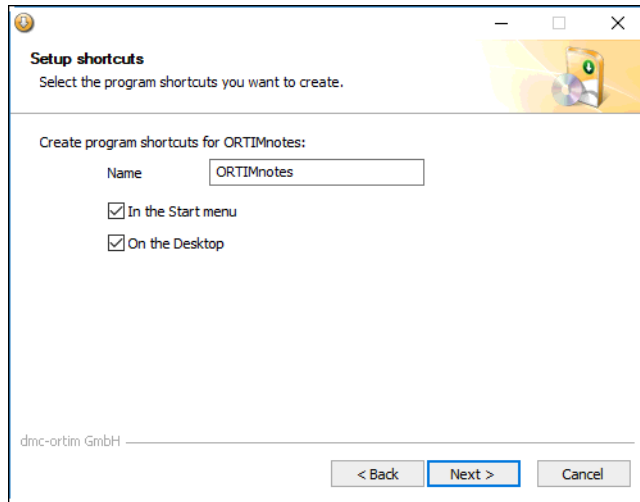
If the expert mode is selected, you can check which data directory belongs to the program directory entered before.



If the expert mode is not selected, this page does not appear.

## Setup shortcuts

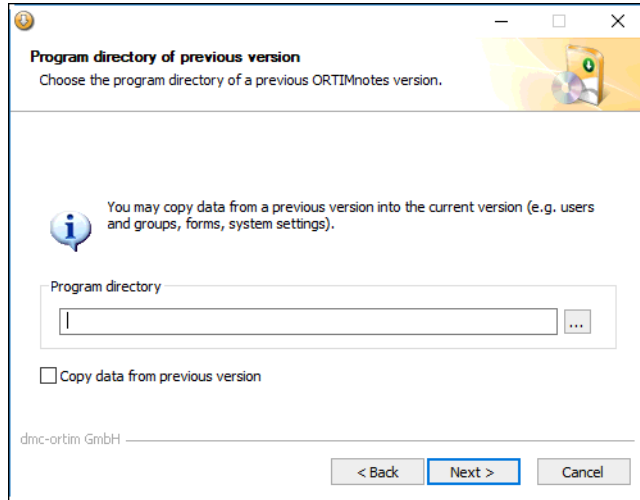
If the expert mode is selected, you can decide, where the program shortcuts are created.



If the expert mode is not selected, this page does not appear and no shortcuts are created.

## Copy data from previous version

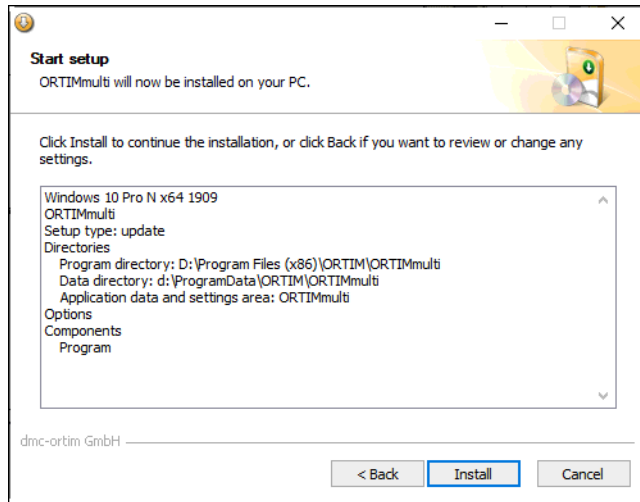
This screen only appears in expert mode.



If you run the update in the expert mode, you can copy files of a previous version to the current version.

## Start setup

Clicking *Next* will display an overview page, showing the installation steps to be expected.



In order for the update to be performed correctly, all ORTIMnotes users are required to exit the program. If an application is running, the setup program will display a message, informing you that certain files could not be copied.

If this happens, exit the update, close ORTIMnotes and repeat the installation sequence for the update.

**Note:** If you have several updates and wish to install ORTIMnotes on a new PC, you only require the last update after performing a full installation.

## 4.7 Using updates

Incremental updates can resolve problems and provide new functions.

dmc-ortim provides an update page on the Internet.

Enter the following address in your web browser.

[https://www.dmc-ortim.de/SoftwareUpdate/ORTIMnotes/4.1.0/changes\\_de-DE.html](https://www.dmc-ortim.de/SoftwareUpdate/ORTIMnotes/4.1.0/changes_de-DE.html).



Updates are available to all users on the Internet support page. Click [here](#) to access the Internet Plug-In page.

**Note:** Before reporting a problem to the dmc-ortim hotline, you should always first visit the Internet support page printed above and load updates for your program version.

ORTIMnotes provides an automatic **Software Update Service**. This service enables the program to update itself. This involves setting up a connection to the Internet and searching for any plug-ins required for the particular program version you are using. The plug-ins can then be automatically loaded and installed, without having to exit the program.

**Note:** We recommend that you use the automatic Software Update Service if you have a direct connection to the Internet.

## 4.8 Configure program to run as service

If ORTIMnotes is installed on a network server, you can configure the program to run as a PC service for launching its own tasks without the need of a PC user to be logged on.

The setup program configures ORTIMnotes as a PC service. The setup program has to be run on the server on which ORTIMnotes is installed. During the setup, you will be prompted to enter an ORTIMnotes user and password. You configure this user beforehand in ORTIMnotes. Make sure that the user has a valid license.

**Note:** The program needs the *Softlock* protection to be used as a service.

### When do I need the service?

The service is useful, when the program has been setup on a central server und tasks should be performed periodically (e.g. data backup, database diagnosis). The service will execute these tasks even if no normal ORTIMnotes user runs the program. The tasks are executed with the best performance available.

ORTIMnotes users can assign the service user (e.g. *service*) to new tasks, for that the task is executed on the server. The service user is entered to the service, when the service setup program is startet (see below).

### Do I need a separate license?

Yes, a normal license is required. The license has to be assigned to the service user in the user manager.

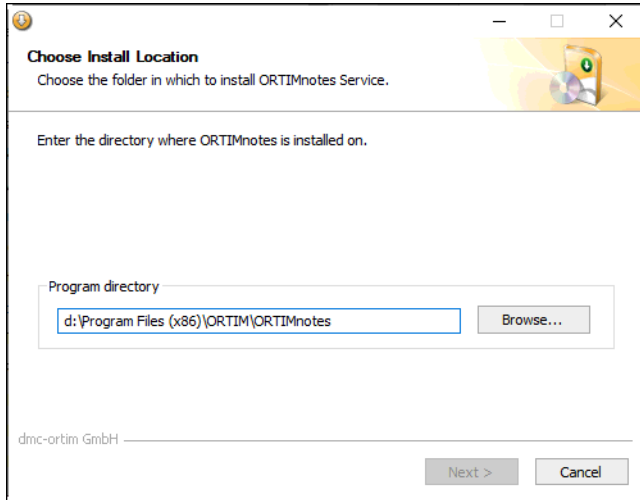
The license is for free, if it does not contain any program modul.

If you want to run a task that requires a special program module (e.g. task *ERP import* requires program module *ERP interface*), the license must contain the program module.

## Setup service

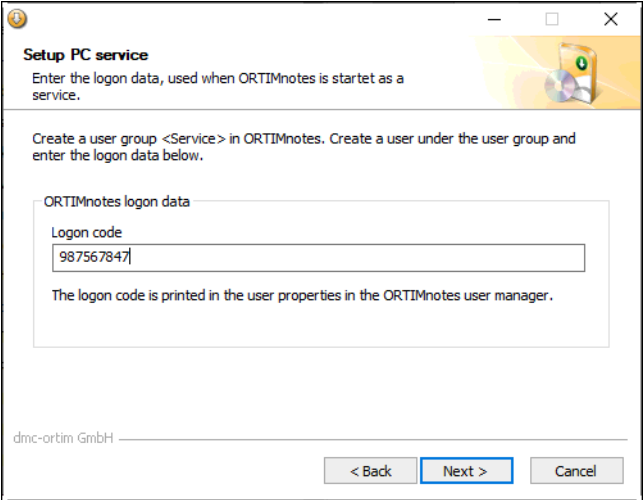
The PC service is configured by the separate installation program *SetupORTIMnotesService.exe*.

Enter the program directory of the ORTIMnotes installation.

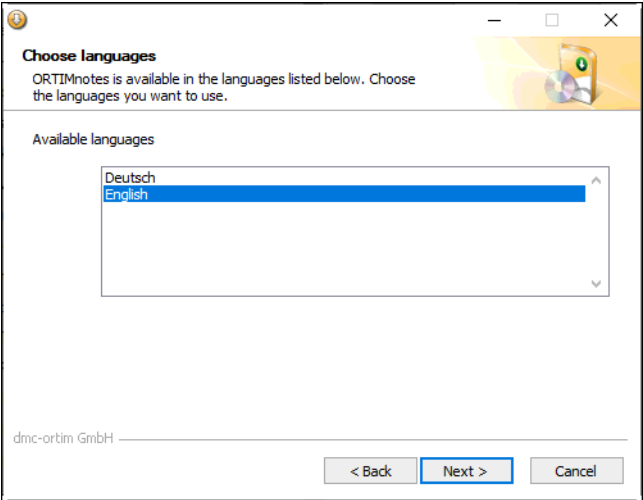


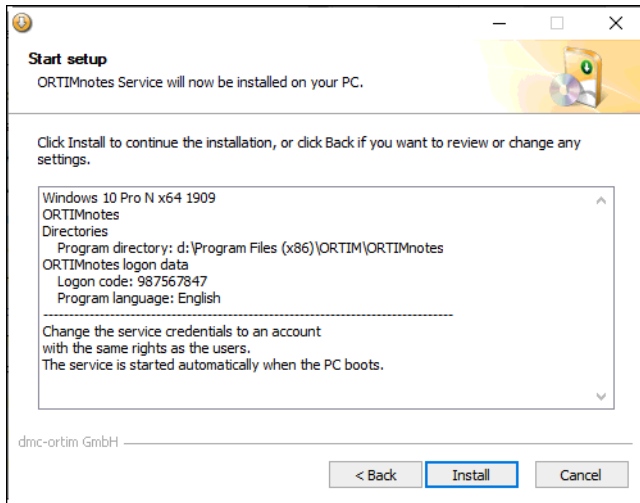
Enter the logon code for an ORTIMnotes user. The user must be added in the ORTIMnotes user manager before. Be sure that the user uses a valid license.

The logon code is printed in the user properties dialog and can be copied to the Clipboard.



Enter the language the service uses for printing messages to the task log.



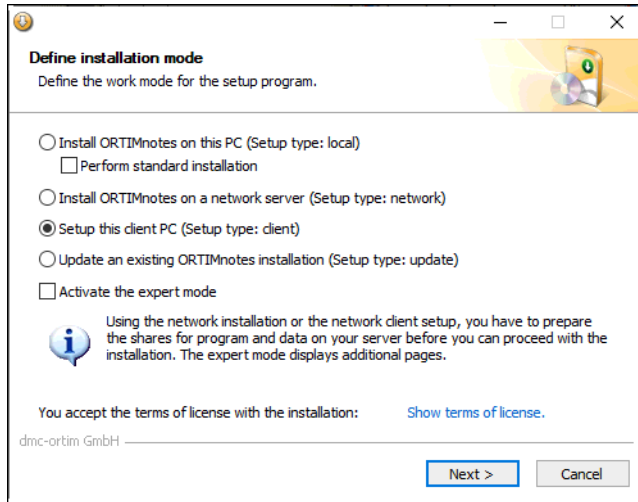


Press *Install* to install the service.

## 4.9 Setup a client PC

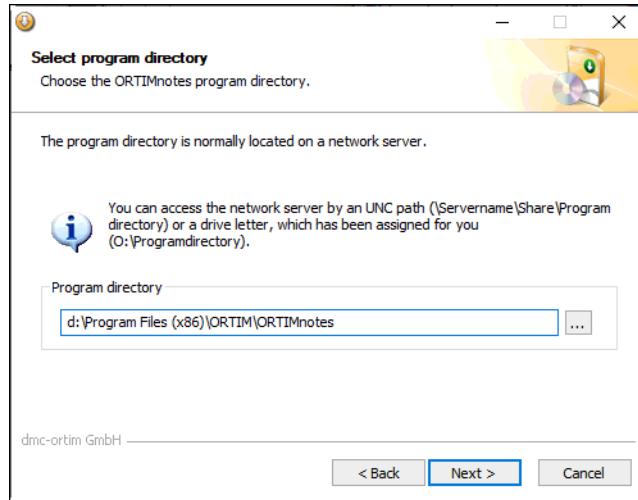
Setup type: client.

If you wish to configure a network workstation, choose installation type <Setup client PC>.



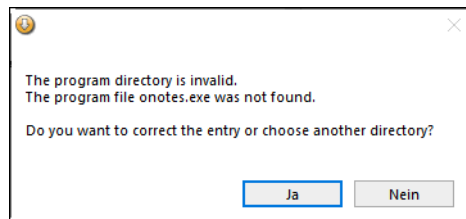
## Choose program directory

On the next page you can enter the During the installation, specify the network directory in which the program is located.



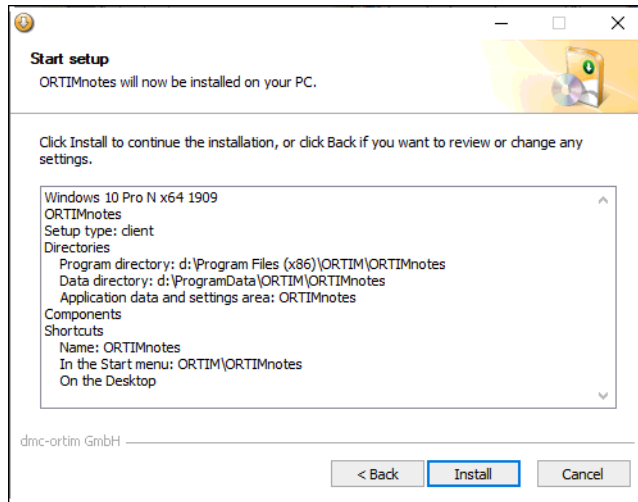
Enter the network directory directly into the entry field or press the ... button to open a directory chooser.

If the following message appears, you can enter the network server credentials and try again.



## Installation

All settings are printed on an overview page.



Press *Install* to run the workstation setup.

If no database **Zen Client** is installed on the workstation PC, the Zen Client database is automatically installed with ORTIMnotes . The database is integrated in the ORTIMnotes installation.



## 4.10 Terminalserver/Citrix Metaframe

ORTIMnotes can be used without any restrictions on a Terminalserver or Citrix Metaframe system.

## 4.11 Possible application scenarios

### Standalone workstation application

When used on a standalone workstation, the program is installed on the user's PC. Initially, a full installation is performed.

Program updates can be used later to upgrade this installation to the latest version. If a number of consecutive updates are available, only the last one is required.

The settings and application database are located on the PC.

### Network application

When the ORTIMnotes is used within a network, the program is installed on a network server. Initially, a full installation is performed.

Program updates can be used later to upgrade this installation to the latest version. If a number of consecutive updates are available, only the last one is required.

It is necessary to perform the network workstation setup on each PC on which the program is to run. This will configure program icons in the Start menu.

The workstation settings are located on each PC, whereas the system settings are managed centrally within the system directory and application databases are generally located in the central database on the network server.

### Training application

When the program is used for training purposes, both of the above-mentioned procedures are possible in principle.

Network application is undoubtedly easier, since the program only has to be installed (or updated) once.

The important thing to remember when the program is used for training purposes is that each course participant must work on a separate database, as the program's network locking mechanisms will otherwise come into effect. This means that an object can only be edited by one person at any one time. None of the other persons can modify the object in question and will receive a corresponding message should they select the object.

For training purposes, copy the database to be used onto each PC.

**Note:** Both program updates as well as the preparation of the databases should be performed prior to the start of the training course.

Launch the program once to ensure that all the steps of the setup procedure have been completed successfully. If you use more than one workstation, it is also important to start the program simultaneously on all the individual workstations, as some problems will only become apparent in doing so.

It is important to perform this test run as a user (and not as an administrator).

If you encounter problems during this phase, you will find detailed trouble-shooting solutions in the following section. The program has been successfully launched if it is possible to sign on as a user (after shipment the username "Abel" with password "a" are available at this stage).

Also take account of all the available plug-ins and utility programs available for downloading from the dmc-ortim Internet web site.

## Test installation

If you wish to test the new ORTIMnotes program version prior to using it, you can carry out the installation on the same PC or server. During the installation, select the expert mode (see above, page 26) and enter unique designations for the test installation. It is then possible to run the test installation without it impacting on an existing installation.

**Note:** Always be sure to use copies of your databases for test purposes.

## Other application scenarios

Further applications are of course possible that are not described in detail here.

### 4.12 Configuring the program on a new PC

If you wish to move an existing network workstation onto a different PC, depending on the program settings, you may not need to perform all the backup steps.

Nevertheless, we would advise you to perform the backup steps mentioned in the following in full.

#### Backup files

If you have already used ORTIMnotes and are about to change over to a new PC, you should first save a number of files.

**Note:** The easiest way is to perform the backup via ORTIMnotes itself. To do this, use task "Data backup" in the ORTIMnotes Task Scheduler (a detailed description can be found in "Basics" user manual).

#### Application databases

The application databases are located in the set database directory. Generally speaking, this is the directory called "Daten" (*Data*) - a subdirectory of the ORTIMnotes data directory. Create backup copies of the "Basis", "Mdata" and "Costs" databases.

#### Forms database

The *ONFORM.BTD* forms database is located in the set system directory. Generally speaking, this is the directory called "System" - a subdirectory of the ORTIMnotes data directory.

Create a backup copy of the forms database.

#### Time category allowances

Some time category allowances are saved in file *ONOTES.CFG* in the set system directory.

Create a backup copy of the time category allowances.

## Settings

The program settings are stored in the registry on your PC.

```
HKEY_CURRENT_USER
  \Software
    \ORTIM Industrial Engineering Deutschland GmbH
      \ORTIMnotes
        \Settings.
```

Furthermore, the program directory may also contain files *PSQL.INI*, *PPS.INI* and *CONTROL.INI*. Some of these files are optional, i.e. they are not always present.

Create a backup copy of the settings files.

## User Manager

Generally speaking, the user database called *ONUSER.BTD* is located in the data directory of ORTIMnotes.

Create a backup copy of the user database.

## Customer files

dmc-ortim provides customer specific time category classifications and analysis systems.

### Time category classifications (\* .ZMB)

The customer specific files must be copied to the **NLS\English\Time Categories** directory.

### Analysis systems (\* .ANA, \* .CFA)

The customer specific files must be copied to the **NLS\English\Analysis** directory.



The database Zen v15 Workgroup is delivered with dmc-ortim programs.

**Note:** If you are already using a previous version of PSQL Workgroup and have a license for it, you can download the corresponding version from the Internet during the installation and install it instead of the integrated database.

## Database Actian Zen offers

### Industry-leading performance

- Btrieve® Performance - transactional API for the fastest access to your data.
- Improved SQL Optimizer - delivers faster SQL performance. ODBC, JDBC, ADO / OLE DB and PDAC all take advantage of these improvements.
- Turbo Write Accelerator - maximizes the efficiency of your disk I/O.
- Full backward compatibility - leverage your legacy applications and databases.

### Low Total cost of ownership

- Auto-Reconnect technology - avoids minor networking issues by seamlessly reconnecting workstations to a server engine in case of a network error.
- Cross-platform dynamic parameters - no need to remaster the database environment from platform to platform.
- Cross-platform consistency - common behavior across all editions and platforms simplifies cross-platform deployment and administration.
- Server/Requester version independence - dramatically simplifies your deployment.

## 5.1 Using the Database Action Zen

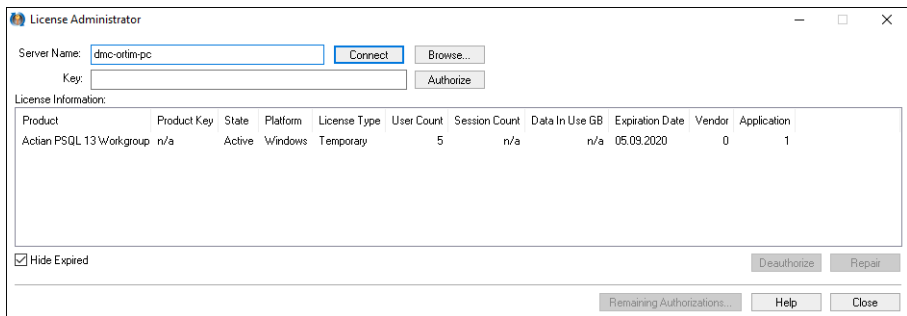
ORTIMnotes is prepared for the use of the Zen database. After installing the Zen database software, it is automatically recognized and used by ORTIMnotes.

### Manage database licenses

The Database Action Zen is installed with a 30-day trial license.

**After this test period**, the database can no longer be used. The **status code 161** is then displayed in ORTIMnotes.

It is best to enter the license key in the Key input field immediately after installation and activate the license with *Authorize*.



**You need an internet connection.**

**Note:** The Internet connection is established via the standard HTTP port 80. If you want to configure your firewall specifically or for example, if you are using a proxy server, please contact dmc-ortim for details about the activation servers and proxy settings.

**The activation can only be performed directly on a PC or a PC / server console. A remote desktop connection does not allow activation.**



## 5.2 Database status messages

### Status 2

If this status occurs during the program startup phase, this means that the reported file is corrupt.

Otherwise you can reorganize the reported file.

### Status 9

If this status occurs during the program startup phase, this means that the program has not been set up correctly. The reason for this may be faulty data carrier (CD). If you encounter this problem, contact dmc-ortim in order to obtain a new data carrier.

### Status 12: File not found

This status can occur in rare cases on launching the program. This can be caused by client software used for integrating drives on a network server. In this case, it is necessary to re-install the dmc-ortim software. In doing this, a destination directory that contains no blanks should be specified.

### Status 20: The file manager is not active

### Status 81: A lock error was encountered

### Status 85: The file is locked

### Status 88: The application encountered an incompatible mode error

### Status 161: The Zen database has not been activated.

After a 30-day test phase in which the database can be operated without activation the status code 161 is displayed. This means the test phase has ended.

Enter the **product key** you have received from dmc-ortim into the **License Administrator** to activate the Database Action Zen permanently.



Each license/serial number is associated with a specific module constellation. Refer to the supplied printout containing the license data for the assignment between the licenses/serial numbers and the program modules.

After signing into the program for the first time, it is necessary to use the ORTIMnotes user manager facility to configure user groups and users. It is then necessary to assign licenses/serial numbers to the groups or users.

The menu options in the user manager are enabled if the particular users or groups are selected. The "Key" option allows you to assign a license/serial number (e.g. 743301) to a user or an entire group. After signing into ORTIMnotes, a program key with the assigned license/serial number is generated for the user.

|                           |           |
|---------------------------|-----------|
| Create sub-group...       | Ctrl+Ins  |
| Delete                    | Del       |
| Rename                    | F2        |
| Copy users from domain... |           |
| Change group settings     | Alt+Enter |
| Assign roles...           |           |
| Apply serial numbers...   |           |
| Apply data access...      |           |

The following screenshot shows a possible assignment of licenses/serial numbers to user groups.

| Name             | Description | Type  | Roles          | Serial numbers | Data access |
|------------------|-------------|-------|----------------|----------------|-------------|
| > CAPP-Knowledge |             | Group | CAPP-Knowledge | all            | all         |
| > Service        |             | Group | Service        | 110099         | all         |
| > User           |             | Group | User           | 110001         | all         |
| Administrator    |             | Group | Administrator  | 110000         | all         |

The key generated is used to attempt to sign in at the Softlock. If successful, no further measures are necessary.

If your attempt to sign in at the Softlock fails (because e.g. all the locks have been allocated for the corresponding licenses/serial numbers), it is possible to generate further keys. To do this, the user or the group must be granted the permission to work with other keys as well via option "Rotate keys..." .

In the example above, license/serial number 700101 has been assigned to the group "Users", although the rotation procedure has not been enabled.

**Note:** We recommend that you create a separate user group for each license/serial number and assign the license/serial number to the particular group. All users subsequently assigned to the group are then automatically signed in for the Softlock with the assigned license/serial number. Licenses/serial numbers should only be assigned to individual users in exceptional cases.

## 7.1 Description of the control file for installing and uninstalling ORTIMnotes

It is possible to use the SETUP.INI control file to influence the setup, updating and uninstalling of ORTIMnotes.

The file must be located in the same directory as the setup or update program in order for it to be read and used. Normally speaking, the control file is not present. In this case, the default values described in the following are used.

### Setup

#### Silent

|                 |  |
|-----------------|--|
| Description     | Controls the working mode of the setup program. In Silent mode, the setup program runs without a program window being opened. All the settings are read from the control file. |
| Possible values | 0 or 1   |
| Default         | 0  |

#### Client

|                 |   |
|-----------------|---|
| Description     | Controls the working mode of the setup program. In Client mode, the setup program will setup the current to PC for the program already installed on a network server. |
| Possible values | 0 or 1  |
| Default         | 0   |

## License

### Path

|                 |   |
|-----------------|---|
| Description     | Path of the license zip file deployed by dmc-ortim. |
| Possible values | A valid file name                                   |
| Default         | none  |

## Pages

### Data

|                 |  |
|-----------------|--|
| Description     | Determines whether or not the screen used for defining the data directory is to be displayed. If the screen is not opened, the data directory is not set and is then identical to the program directory. |
| Possible values | 0 or 1   |
| Default         | 1  |

### AppData

|                 |   |
|-----------------|---|
| Description     | Determines whether or not the screen used for defining the application data directory is to be displayed. If the screen is not opened, the application data directory is not set and is then identical to application data directory for the currently logged on PC user. |
| Possible values | 0 or 1  |
| Default         | 1   |

### Settings

|                 |        |
|-----------------|--------|
| Possible values | 0 or 1 |
| Default         | 1      |

### Shortcuts

|                 |        |
|-----------------|--------|
| Possible values | 0 or 1 |
| Default         | 1      |

### **AccessControl**

Possible values 0 or 1

Default 1

### **SoftwareUpdate**

Possible values 0 or 1

Default 1

### **PSQL**

Description Determines whether or not the screen used for defining the Zen Workgroup settings is to be displayed.

Possible values 0 or 1

Default 1

### **LanguagePacks**

Possible values 0 or 1

Default 1

## **Service**

### **LogonCode**

Description The logon code can be used for an anonymus logon.

Possible values A valid logon code

Default none

### **Language**

Description The language, the service should use.

Possible values An installed language

Default The system language

## ProgramDir

### Path

|                 |   |
|-----------------|---|
| Description     | Path of the program directory (e.g. %PROGRAMFILES%\ORTIMnotes 4.1). |
| Possible values | A valid directory   |
| Default         | %PROGRAMFILES%\ORTIM\ORTIMnotes                                     |

### Validate

|                 |  |
|-----------------|--|
| Description     | Determines whether or not the specified program directory is validated. If this check is enabled and the specified directory does not exist, the default will be used. |
| Possible values | 0 or 1   |
| Default         | 1  |

## DataDir

### Path

|                 |   |
|-----------------|---|
| Description     | Path of the data directory (e.g. D:\ORTIMnotes). The directory must be accessible to all ORTIMnotes users within the network. All the users require write access to the data directory. |
| Possible values | A valid directory   |
| Default         | C:\ORTIM\ORTIMnotes   |

### Validate

|                 |  |
|-----------------|--|
| Description     | Determines whether or not the specified data directory is validated. If this check is enabled and the specified directory does not exist, the default will be used |
| Possible values | 0 or 1   |
| Default         | 1  |



### **Create**

|                 |  |
|-----------------|--|
| Description     | Determines whether or not the data directory is to be created. |
| Possible values | 0 or 1   |
| Default         | 1  |

### **Grant**

|                 |   |
|-----------------|---|
| Description     | Determines whether or not write access is to be assigned to the data directory. If this denied in the setup program, it is necessary to assign the write access manually. All users must have write access to the data directory. |
| Possible values | 0 or 1  |
| Default         | 1   |

## **Components**

### **Program**

|                 |                         |
|-----------------|-------------------------|
| Description     | Installs program files. |
| Possible values | 0 or 1                  |
| Default         | 1                       |

### **PSQL**

|                 |  |
|-----------------|--|
| Beschreibung    | The database Zen Workstation will be installed (if available) or not. The setup files for the Zen database are searched in the subdirectory \PSQL of the directory containing the program setup. |
| Possible values | 0 or 1   |
| Default         | 1  |

## LanguagePacks

### Deutsch | English

|                 |  |
|-----------------|--|
| Description     | Determines if a language pack is automatically installed with the full installation. Requires an existing language pack setup file (e.g. SetupEnglish.exe) in the same directory as of the setup file. |
| Possible values | 0 or 1   |
| Default         | 1  |

### Update

|                 |  |
|-----------------|--|
| Description     | Determines if a language pack is automatically installed when an update is installed. Requires an existing language pack setup file (e.g. SetupEnglish.exe) in the same directory as of the update file. |
| Possible values | 0 or 1   |
| Default         | 1  |

## Language

### Default

|                 |  |
|-----------------|--|
| Description     | Determines the program language for the first program start. |
| Possible values | An installed language  |
| Default         | none   |

## Shortcuts

### Instructions

|                 |  |
|-----------------|--|
| Description     | Show setup instructions in Start menu. |
| Possible values | 0 or 1                                 |
| Default         | 1                                      |

### Manuals

|             |                             |
|-------------|-----------------------------|
| Description | Show manuals in Start menu. |
|-------------|-----------------------------|

Possible values 0 or 1  
Default 1

### **IconName**

Description Name of the shortcut on the Desktop and in the Start menu.  
Possible values A string  
Default The program name

### **Startmenuicons**

Description Creates shortcuts in the Start menu. On an additional screen, it is possible to define the Start menu.  
Possible values 0 or 1  
Default 1

### **Desktopicon**

Description Creates a shortcut on the Desktop.  
Possible values 0 or 1  
Default 1.

**Note:** The shortcuts in the Start menu and on the Desktop are created for all PC users. Due to PC restrictions, the shortcut in the Quick Launch bar can only be created for the current user. If ORTIMnotes is installed by an administrator, and the program is subsequently launched by different PC users, the icon will not be available in the Quick Launch bar.

## SoftwareUpdate

### Activate

|                 |  |
|-----------------|--|
| Description     | Controls the settings for the automatic Software Update.             |
| Possible values | 0 (turn off),<br>1 (turn on),<br>-1 (define on first program launch) |
| Default         | -1   |

## PSQL

### Service

|                 |   |
|-----------------|---|
| Description     | Determines the installation mode of the Zen Workgroup.        |
| Possible values | 0 (install as application),<br>1 (install as Windows service) |
| Default         | 0   |

### Version

|                 |   |
|-----------------|---|
| Description     | Specifies the Zen Workgroup version to use.               |
| Possible values | 13 or empty (download and install PSQL Workgroup v11 SP3) |
| Default         | empty   |

### Autostart

|                 |   |
|-----------------|---|
| Description     | Only valid for the separate Zen Workgroup installation.   |
| Possible values | 0 or empty (performs full installation with all choices - directories, components),<br>1 (performs the installation with default settings). |
| Default         | empty   |

## Uninstall

### Silent

|                 |   |
|-----------------|---|
| Description     | Controls the working mode of the uninstall program. In Silent mode, the uninstall program runs without a program window being opened. All the settings are read from the section "Uninstall" of the control file. |
| Possible values | 0 or 1  |
| Default         | 0   |

### Settings

|                 |                  |
|-----------------|------------------|
| Description     | Remove settings. |
| Possible values | 0 or 1           |
| Default         | 1                |

### Data

|                 |   |
|-----------------|---|
| Description     | Removes program data (e.g. user manager, forms, tasks, journal, application databases). |
| Possible values | 0 or 1  |
| Default         | 0   |

## System variables

The system variables can be used in the path specifications for "ProgramDir", "DataDir" and "BtrieveDir".

### %PROGRAMFILES%

This variable is replaced by the program directory set on your PC (e.g. C:\ProgramFiles).

### %SYSTEMROOT%

This variable is replaced by the Windows directory set on your PC (e.g. C:\WINDOWS).

## **%PROGRAMDIR%**

This variable is replaced by the current value for the program directory.

## **Return values of the setup and uninstall program**

The setup and uninstall program generates the following return values when executed on a system console or in a command script.

- |   |   |
|---|---|
| 0 | Normal execution (no errors).                     |
| 1 | Setup aborted by user ("Abort" key selected).     |
| 2 | Setup aborted by script (error during execution). |

## Example

```
; Contents: This file controls the behavior of installers and
uninstallers.
; Files: Setup.exe, SetupDeutsch.exe, SetupEnglish.exe,
; SetupClient.exe, Update.exe.
; Description: The file is sought in the directory where the installer
; or uninstaller is located.

;
=====
; ===== Errorlevel
=====
;
=====
; 0 - Normal execution (no error)
; 1 - Installation aborted by user (cancel button)
; 2 - Installation aborted by script

;
=====
; ===== Installer
=====
;
=====
; Section: Installer behavior
; Description: When the installer runs in silent mode, the components
; will be installed as specified in section "Components"
; Default: Silent=0
[Setup]
Silent=0

[Pages]
Btrieve=1
Data=1

; Section: Program directory
; Description: The program directory is the directory, where the program
; files are installed. The program directory is read only.
; Default: %PROGRAMFILES%\ORTIM\ORTIMnotes, Validate=1
; Path: The path of the program directory
; Validate: Check if the directory exists. If not, use the default.
[ProgramDir]
Path=%PROGRAMFILES%\ORTIM\ORTIMnotes
Path=D:\Programme\ORTIM\ORTIMnotes
Validate=0

; Section: Data directory
; Description: The data directory is used for the programs data files.
```

```

; Each user must have write access to the directory and
; all subdirectories and must have the right to create new files.
; Files:Benutzer.btd, Tasks.btd, Journal.btd, Onform.btd,
; application database, key files, log files
; Grant read and write access
; Default: C:\ORTIM\ORTIMnotes, Validate=1, Create=1, Grant=1
; Path: The path of the data directory
; Validate: Check if the directory exists. If not, use the default.
; Create: If the directory does not exist, create it.
; Grant: Grant the necessary user rights (write access for PC
; usergroup "Everyone") to the directory.
[DataDir]
;Path=C:\ORTIM\ORTIMnotes
Path=D:\ORTIM\ORTIMnotes
Validate=0
Create=1
Grant=1

; Section: Btrieve directory
; Description: The directory must be on the local machine.
; Each user must have write access on the directory.
; Default: %SYSTEMROOT%\Temp, Validate=1, Create=1, Grant=1
; Path: The path of the Zen directory
; Validate: Check if the directory exists. If not, use the default.
; Create: If the directory does not exist, create it.
; Grant: Grant the necessary user rights (write access for PC
; usergroup "Everyone") to the directory.
[BtrieveDir]
;Path=%SYSTEMROOT%\Temp
Path=C:\Windows\Temp
Validate=0
Create=1
Grant=1

; Section: Cmponents
; Default: Backup=1, Program=1, Libraries=1, BtrieveFiles=1,
; BtrieveSettings=1, StartmenuIcons=1, DesktopIcon=1
; Backup: Create a backup of the program files, when an update is
installed.
; Program: Install the base program files.
; Libraries: Install the system libraries (DLLs and other stuff).
; BtrieveFiles: Install the Btrieve Workstation Engine 6.15.
; BtrieveSettings: Set the correct settings to enable Btrieve to run.
[Components]
Program=1
Libraries=1
BtrieveFiles=1
BtrieveSettings=1

; Section: Shortcuts
; Default: ORTIMIcon=1, StartmenuIcons=1, DesktopIcon=1
; ORTIMIcon: Set a special ORTIM icon for the start menu folder
; StartmenuIcons: Create icons in the Start menu on your PC.

```



```

; DesktopIcon: Create an icon on the PC desktop.
[Shortcuts]
ORTIMIcon=0
StartmenuIcons=1
DesktopIcon=1

; default language for the first program start
[Language]
Default=Deustch

;
=====
; ===== Uninstaller
;
=====
; Section: Uninstaller behavior and components.
; Default: Silent=0, Settings=1, Data=0.
; Silent: Run the uninstaller in silent mode.
; Settings: Uninstall the program settings from the registry.
; Data: Uninstall the data created or modified by the program.
[Uninstall]
Silent=0
Settings=1
Data=0

```

## 7.2 Description of the program control file

The items in file CONTROL.INI may control the behavior of the program.

### Directory

#### AppData

AppData=CurrentUser | AllUsers | Personal | Windows | User | Custom

#### Path

if AppData=Custom, a directory must be inserted

### User

#### Path

if AppData=User, a directory must be inserted

### AppDataDirectory

#### Path

insert a valid directory relativ to the %APPDATA% variable.

**Note:** Do not use directories or directory variables that point to a central network directory (eg. %PROGRAMDATA%).

### Settings

#### Key

ORTIMuser | User | Custom

#### Custom

if Key=Custom, a key must be inserted

## User

### Key

if Key= User, the value of the key {Key} is inserted in section {User}

## UserManager

### MinPwdLength

Number of characters.

The default value is 0. 0 means that the user may have no password.

## Logging

### License timer

Enable or disable the license timer logging.

Possible values: 0 or 1, default is 0.

### Shutdown procedure

Enable or disable the shutdown procedure logging.

Possible values: 0 or 1, default is 0.

## OpenSSL

### Version

Specifies the version of the OpenSSL libraries used. You should only change the version from 3 to 1 after consulting dmc-ortim.

Possible values: 1 or 3, default is 3.

## ImageLibrary

### Cache

Determines whether the program libraries `ortim32.dll` and `office.dll`, which contain the images, symbols and icons used in the program, are copied to the local AppData folder and used or not when installed on a network server. Local use reduces network load. If there are problems with the version of the local files, access can be made directly to the network server. To do this, enter the value 0.

Possible values: 1 or 0, default is 1.

### Setup the application data directory

The license file and the user manager database are stored in the application data directory.

The app data directory is not fixed. The directory is managed by Items in the control file `CONTROL.INI`.

The default directory is the personal app data directory on your PC.

So every user has its own log and key file.

### Example

```
[Directory]
AppData=CurrentUser
```

Data are stored in the personal app data directory (default).

```
[Directory]
AppData=User
```

```
[User1]
Path=C:\ORTIM\User1
```

If the PC user *User1* is logged on, data are stored in directory *C:\ORTIM\User1*.

```
[Directory]
AppData=Custom
Path=C:\Settings
```

The settings for all users are stored in directory *C:\Settings*.

```
[AppDataDirectory]
Path=%APPDATA%\ORTIM\ORTIMnotes 6.0
```

Setup the registry key under which the program settings are stored in the PC registry.  
With *ORTIMuser* separate settings are used for each PC user.  
With *User* the key inserted in the ORTIM user section is used.  
With *Custom* a user independent key can be used.

```
[Settings]
Key=ORTIMuser
```

If ORTIM user *Abel* is logged on, the settings are managed under key *Abel*.

```
[Settings]
Key=User
[Abel]
Key=Administrator
```

If ORTIM user *Abel* is logged on, the settings are managed under key *Administrator*.

```
[Settings]
Key=Custom
Custom=ORTIM
```

The settings are managed under key *ORTIM*.

## Setup the minimum password length

### Example

```
[UserManager]
MinPwdLength=8
```

## Enable logging

### Example

```
[Logging]
License timer=1
Shutdown procedure=1
```

## 7.3 Description of the control file for the Zen database

The BTRIEVE.INI controls the behavior of the Zen database.

### Control file BTRIEVE.INI

#### Btrieve Server

##### Server

Value 0 turns off the server, value 1 turn the server on.

Possible values:

0=turn off,

1=turn on.

default is 1.

#### Object Converter

##### Extentcheck

The meta data on storing.

Possible values:

0=turn off,

1=turn on.

default is 1.

##### IgnoreErrors

Ignore errors loading objects.

The application then is served with nil values.. the application may manage these values.

This settings should only be used temporary.

## Btrieve Client

### **CheckAccess**

Enable or disable the network access control.

Possible values:

0=turn off,

1=turn on

default is 1.

### **CheckRemote**

Enable checking of the Zen database during the program startup.

Print a warning, if a client is used with a local setup.

Possible values:

0=do not check,

1=check.

default is 1.

### **LogStored, LogRemoved, LogLocked**

Log deleted objects.

Possible values:

0=turn off,

1=turn on.

default is 0.

### **MaxCacheSize**

Maximum number of objects stored in the clients database cache.

default is 10000.

### **NumberOfLoadTries**

Number of tries when loading a locked object.

Possible values: 1 to 100, default is 3.

### **NumberOfStoreTries**

Number of tries when saving a locked object.

Possible values: 1 to 100, default is 5.

### **NumberOfLockTries**

Number of tries when locking a locked object.

Possible values: 1 to 100, default is 1.

### **TimeToWait**

Millisecond time to wait between multiple tries.

Possible values: 50 to 60000, default is 1000.

### **WaitAfterOpen**

Milliseconds time to wait after a Zen database is opened. Use this setting when the Zen Workgroup is installed as application and Zen status code 3012 is reported when starting the program.

Possible values: 0 to 10000, default is 0.

### **WaitAfterCreate**

Milliseconds time to wait after a Zen database is created before it is first opened. Use this settings, if your domain controller is far away (accessing the file privileges take a little time).

Possible values: 0 to 60000, default is 0.

### **WarnDBID**

Print a message when the database server cannot be found.

Possible values:

0=do not print message,

1=print message.

default is 0.



## The following options are not necessary for PSQL versions greater 9

### **OpenMode**

Setup the database open.

Possible values:

1=use complete path,

2=jump to directory, only use file name.

default is 1.

### **Cache**

PSQL cache in kb.

Possible values: 512 to 16384, default is 512.

### **AnsiToOem**

ANSI to OEM character transformation for file names.

Possible values:

0=do not use,

1=always use,

6=use for Btrieve 6.

default is 6.

### **ShortPathName**

Use short path names. Determines, if the 8.3 naming convention should be used or not.

Possible values:

0=do not use,

1=always use,

9=use for PSQL 6 to 9.

default is 9.

### **ShortPathNameMode**

Setup the PC functions for the 8.3 naming convention (getShortPathName or get83FilePath).

Possible values:

1=first getShortPathName, if not successful use get83FilePath,

2=always use getShortPathName,

3=always use get83FilePath.

default is 1.

## 7.4 How does the license file work?

The *license* works on the basis of the lock and key principle. dmc-ortim provides a series of keys and locks within the *license* database. For each lock it is defined which keys "fit". Registration in terms of the *license file* implies selecting a key and searching for a lock that fits it. If a matching lock is found that is not "taken" (assigned) by a key, the key will be inserted into the lock. This means that the lock is now assigned and can no longer be used by other keys. Only on exiting the program is the key removed from the lock, meaning that the lock is free again, thus allowing it to be used again.

## 7.5 Control of automatic activation

The automatic license activation is performed via the TCP port 80.

If this port is not enabled for ORTIMnotes, the activation can not be performed.

If you use a proxy server or another port, you can change the port in the *activation.ini* file (ORTIMnotes program directory).

```
;Parameters for license activation via the Internet  
  
[Client]  
address=activation.dmc-ortim.de  
object=activation  
port=80
```

## 7.6 License file status messages

If the license reports a problem when a user attempts to sign in, you can ascertain the cause and find a solution from the following description.

- 1001 No lock available e.g. if the license has expired. Contact dmc-ortim to obtain an update for your license.
- 1002 Invalid lock if a matching lock is assigned. All the program accesses for a serial number are assigned. A different user first has to exit the program before you can work.
- 1003 The lock is locked if an access conflict arises. A different user in the network is in the process of signing in. Try to sign in again later after waiting a short while.
- 1004 The database server is not available for the license file. The settings for the database are incorrect. These settings must be the same on all the PCs.
- 1005 The number of days of usage has expired: Your license has expired. Contact dmc-ortim to obtain an update for your license.
- 1006 Utilization period exceeded: Your license has expired. Contact dmc-ortim to obtain an update for your license.
- 1007 No lock for serial number. All the program accesses have been assigned for a serial number. A different user first has to exit the program before you can work.
- 1008 Error when saving during the signing in process. A different user in the network is in the process of signing in. Try to sign in again later after waiting a short while.
- 1009 No activation code: The license is has not yet been activated. The license should be activated when used for the first time. Contact dmc-ortim in order to obtain an activation code. For this purpose, you are required to send dmc-ortim your serial number and the device code. You can, however, continue to work for a temporary period of one week without having activated the license.

# License agreement

The Licensee hereby concludes the following Agreement with Licensor, dmc-ortim GmbH.

## § 1 Subject of the Agreement

1. The subject of this Agreement are the rights of license to the dmc-ortim Software procured by the Licensee. In concluding this License Agreement pertaining to the Software, the Licensee acquires the right to use the Software programs in his own company for his own purposes. The programs remain the property of dmc-ortim GmbH as the Producer of the Software.
2. The shipment of new versions of the Software (updates and upgrades) is not covered by this License Agreement.
3. Along with the Software, the Licensee receives user manual texts and information material, which is merely of a descriptive nature.
4. This Agreement automatically applies for subsequent orders of Software Licenses. The Software, comprising in each case the data media with the computer program itself along with the program protection facility and user manual texts, is protected by copyright. As far as dmc-ortim GmbH itself does not own these copyrights pertaining to the Software or parts thereof, it does, however, own the rights which allow their transfer for use by third parties.

## § 2 License fee, commencement of Agreement

1. The license fee will be stipulated by dmc-ortim GmbH in the form of a separate invoice.
2. This Agreement commences on being countersigned by the Licensee or at the latest, however, when the Software is put into use.

## § 3 Scope of the License

1. dmc-ortim GmbH grants the Licensee the unlimited, non-exclusive and personal right to use the Software on a stand-alone computer or on a network computer.
2. If the Software is installed on a network server, a separate License is required not for the server itself but for each computer on which the software is to run.
3. The Licensee is entitled to create backup copies of the Software, as far as this is required for normal usage.

## § 4 Transfer of the License

1. The right for using the Software can only be transferred to third parties with the written consent of dmc-ortim GmbH.
2. This also applies if the Software is only transferred to third parties for a short period of time.

## § 5 Limitations of the License

1. The Licensee is obligated to leave the Software in its original condition. In particular, he is not entitled to reverse engineer, decompile, disassemble or modify the Software in any other way.
2. Except for the purpose of creating his own backup copies, the Licensee is not entitled to reproduce the software. In particular, he is not entitled to make such copies or the actual Software available to third parties, unless the Software is also meant to be used by third parties and has an interface to the outside for this purpose.

## § 6 Warranty and Liability

1. dmc-ortim systems are standard software applications. dmc-ortim GmbH reserves the right to implement modifications to its standard software that are designed to enhance the user benefits or for other practical reasons.
2. If a fault occurs in the Software, the Licensee is obliged to notify dmc-ortim GmbH of this at once or at the latest within two weeks of its occurrence. This fault report is to be sent in conjunction with the log file to dmc-ortim GmbH (in the form of a printout, copied onto a data medium, transmitted by e-mail). If requested, the Licensee shall also supply dmc-ortim GmbH with the data in which the error was observed. dmc-ortim GmbH guarantees that these data will only be used for fault analysis purposes and subsequently deleted instantly.
3. A fault is regarded as a reproducible abnormal program termination in conjunction with an error message or malfunction, and not the absence of an additional program function desired by the Licensee.
4. dmc-ortim GmbH shall rectify at its own expense legitimate software errors. dmc-ortim GmbH shall endeavor to eliminate any such errors as swiftly as possible.
5. dmc-ortim GmbH is not liable for damages arising from software errors, unless, that is, legal regulations explicitly oppose this. The liability – both for dmc-ortim GmbH's own fault and for the fault of vicarious agents – is limited to wilful intent and gross negligence. The liability on the part of dmc-ortim GmbH for vicarious agents is limited, provided that this does not involve higher-level management, to the care exercised in the selection of the vicarious agents and their supervision.
6. In the case of gross negligence, the extent of any damage claim is restricted to the net price for the agreed service. Any compensation for damage is always restricted – in terms of the sum – to the cover provided by dmc-ortim GmbH's business liability insurance at the time of the damage occurring. This insurance cover currently stands at EUR 250,000.
7. dmc-ortim GmbH accepts no liability for errors, disturbances or damage arising from improper operation, the use of unsuitable equipment, abnormal operating conditions and, in the case of online connections to the central system of an external manufacturer, for errors, disturbances or damage attributable to this central system or the associated line network.

## § 7 Breach of this Agreement

1. dmc-ortim GmbH is entitled to cancel this License Agreement at any time and with immediate effect if the Licensee breaches any of the provisions set out in it.

2. The Licensee is liable to dmc-ortim GmbH for any damages arising from the breach of obligations derived from this Agreement. For each breach of this Agreement, dmc-ortim GmbH can – irrespective of further claims for damages – and to the exclusion of the continuation of the circumstances responsible for causing the breach – impose a penalty equivalent to 100% of the purchase price for the corresponding overall program, without dmc-ortim GmbH having to prove in detail the actual damage incurred. Payment of this penalty does not release the Licensee from his obligations to comply with the provisions of this Agreement.
3. If, contrary to § 5 subsection 1 of this Agreement, the Licensee tampers with the program and changes the running of the Software, he is also liable to pay dmc-ortim GmbH a penalty of EUR 10,000.

## **§ 8 Safeguarding clause, written form, jurisdiction**

1. If parts of this Agreement are or become invalid or partially invalid, this does not affect the validity of the remaining provisions. In such instances, the contracting parties are obliged moreover to replace the invalid provision with one that comes as close as possible to the original business objective. Any amendments to this Agreement require the written form.
2. Amendments to this Agreement can only be made in writing; this also applies to this written form clause.
3. This Agreement is subject to German law. The place of jurisdiction is Kiel.

## IconExperience

### License Agreement

This is a legal agreement between you, the purchaser, and INCORS GmbH ("INCORS"). By downloading any icons from this website, you agree to be bound by the terms of this agreement.

All ownership and copyright of the licensed icons remain the property of INCORS. INCORS grants to you a nonexclusive, non-sublicensable right to use the icons royalty-free according to the license terms for any commercial or personal design and software projects. You may also display the icon in related documentation, help files, and advertising materials.

You may modify the icons in shape, color, and/or file format and use the modified icons royalty-free according to the license terms for any commercial or personal design and software projects. You may also display the modified icons in related documentation, help files, and advertising materials.

You may not lease, license or sub-license the icons, or a subset of the icons, or any modified icons to any third party unless they are incorporated into your own software or design products, which do not compete directly with the IconExperience icon collections.

All icon files are provided "As is" without warranties of merchantability and fitness for a particular purpose. You agree to hold INCORS harmless for any result that may occur during the course of using the licensed icons.

This License Agreement shall be governed and construed in accordance with the laws of Germany. No choice of law rules of any jurisdiction will apply. If any provision of this License Agreement is held to be unenforceable, this License Agreement will remain in effect with the provision omitted.



## License Agreement

### FreelImage Public License - Version 1.0

#### 1. Definitions.

1.1. "Contributor" means each entity that creates or contributes to the creation of Modifications.

1.2. "Contributor Version" means the combination of the Original Code, prior Modifications used by a Contributor, and the Modifications made by that particular Contributor.

1.3. "Covered Code" means the Original Code or Modifications or the combination of the Original Code and Modifications, in each case including portions thereof.

1.4. "Electronic Distribution Mechanism" means a mechanism generally accepted in the software development community for the electronic transfer of data.

1.5. "Executable" means Covered Code in any form other than Source Code.

1.6. "Initial Developer" means the individual or entity identified as the Initial Developer in the Source Code notice required by Exhibit A.

1.7. "Larger Work" means a work which combines Covered Code or portions thereof with code not governed by the terms of this License.

1.8. "License" means this document.

1.9. "Modifications" means any addition to or deletion from the substance or structure of either the Original Code or any previous Modifications. When Covered Code is released as a series of files, a modification is:

(a) any addition to or deletion from the contents of a file containing Original Code or previous Modifications.

(b) any new file that contains any part of the Original Code or previous Modifications.

1.10. "Original Code" means Source Code of computer software code which is described in the Source Code notice required by Exhibit A as Original Code, and which, at the time of its release under this License is not already Covered Code governed by this License.

1.11. "Source Code" means the preferred form of the Covered Code for making modifications to it, including all modules it contains, plus any associated interface definition files, scripts used to control compilation and installation of an Executable, or a list of source code differential comparisons against either the Original Code or another well known, available Covered Code of the Contributor's choice. The Source Code can be in a compressed or archival form, provided the appropriate decompression or de-archiving software is widely available for no charge.

1.12. "You" means an individual or a legal entity exercising rights under, and complying with all of the terms of, this License or a future version of this License issued under Section 6.1. For legal entities, "You" includes any entity which controls, is controlled by, or is under common control with You. For purposes of this definition, "control" means (a) the power, direct or indirect, to cause the direction or management of such entity, whether by contract or otherwise, or (b) ownership of fifty percent (50%) or more of the outstanding shares or beneficial ownership of such entity.

## **2. Source Code License.**

### **2.1. The Initial Developer Grant.**

The Initial Developer hereby grants You a world-wide, royalty-free, non-exclusive license, subject to third party intellectual property claims:

- (a) to use, reproduce, modify, display, perform, sublicense and distribute the Original Code (or portions thereof) with or without Modifications, or as part of a Larger Work; and
- (b) under patents now or hereafter owned or controlled by Initial Developer, to make, have made, use and sell ("Utilize") the Original Code (or portions thereof), but solely to the extent that any such patent is reasonably necessary to enable You to Utilize the Original Code (or portions thereof) and not to any greater extent that may be necessary to Utilize further Modifications or combinations.

### **2.2. Contributor Grant.**

Each Contributor hereby grants You a world-wide, royalty-free, non-exclusive license, subject to third party intellectual property claims:

- (a) to use, reproduce, modify, display, perform, sublicense and distribute the Modifications created by such Contributor (or portions thereof) either on an unmodified basis, with other Modifications, as Covered Code or as part of a Larger Work; and
- (b) under patents now or hereafter owned or controlled by Contributor, to Utilize the Contributor Version (or portions thereof), but solely to the extent that any such patent is reasonably necessary to enable You to Utilize the Contributor Version (or portions thereof), and not to any greater extent that may be necessary to Utilize further Modifications or combinations.

## **3. Distribution Obligations.**

### **3.1. Application of License.**

The Modifications which You create or to which You contribute are governed by the terms of this License, including without limitation Section 2.2. The Source Code version of Covered Code may be distributed only under the terms of this License or a future version of this License released under Section 6.1, and You must include a copy of this License with every copy of the Source Code You distribute. You may not offer or impose any terms on any Source Code version that alters or restricts the applicable version of this License or the recipients' rights hereunder. However, You may include an additional document offering the additional rights described in Section 3.5.

### **3.2. Availability of Source Code.**

Any Modification which You create or to which You contribute must be made available in Source Code form under the terms of this License either on the same media as an Executable version or via an accepted Electronic Distribution Mechanism to anyone to whom you made an Executable version available; and if made available via Electronic Distribution Mechanism, must remain available for at least twelve (12) months after the date it initially became available, or at least six (6) months after a subsequent version of that particular Modification has been made available to such recipients. You are responsible for ensuring that the Source Code version remains available even if the Electronic Distribution Mechanism is maintained by a third party.

### **3.3. Description of Modifications.**

You must cause all Covered Code to which you contribute to contain a file documenting the changes You made to create that Covered Code and the date of any change. You must include a prominent statement that the Modification is derived, directly or indirectly, from Original Code provided by the Initial Developer and including the name of the Initial Developer in (a) the Source Code, and (b) in any notice in an Executable version or related documentation in which You describe the origin or ownership of the Covered Code.

### 3.4. Intellectual Property Matters

#### (a) Third Party Claims.

If You have knowledge that a party claims an intellectual property right in particular functionality or code (or its utilization under this License), you must include a text file with the source code distribution titled "LEGAL" which describes the claim and the party making the claim in sufficient detail that a recipient will know whom to contact. If you obtain such knowledge after You make Your Modification available as described in Section 3.2, You shall promptly modify the LEGAL file in all copies You make available thereafter and shall take other steps (such as notifying appropriate mailing lists or newsgroups) reasonably calculated to inform those who received the Covered Code that new knowledge has been obtained.

#### (b) Contributor APIs.

If Your Modification is an application programming interface and You own or control patents which are reasonably necessary to implement that API, you must also include this information in the LEGAL file.

### 3.5. Required Notices.

You must duplicate the notice in Exhibit A in each file of the Source Code, and this License in any documentation for the Source Code, where You describe recipients' rights relating to Covered Code. If You created one or more Modification(s), You may add your name as a Contributor to the notice described in Exhibit A. If it is not possible to put such notice in a particular Source Code file due to its structure, then you must include such notice in a location (such as a relevant directory file) where a user would be likely to look for such a notice. You may choose to offer, and to charge a fee for, warranty, support, indemnity or liability obligations to one or more recipients of Covered Code. However, You may do so only on Your own behalf, and not on behalf of the Initial Developer or any Contributor. You must make it absolutely clear that any such warranty, support, indemnity or liability obligation is offered by You alone, and You hereby agree to indemnify the Initial Developer and every Contributor for any liability incurred by the Initial Developer or such Contributor as a result of warranty, support, indemnity or liability terms You offer.

### 3.6. Distribution of Executable Versions.

You may distribute Covered Code in Executable form only if the requirements of Section 3.1-3.5 have been met for that Covered Code, and if You include a notice stating that the Source Code version of the Covered Code is available under the terms of this License, including a description of how and where You have fulfilled the obligations of Section 3.2. The notice must be conspicuously included in any notice in an Executable version, related documentation or collateral in which You describe recipients' rights relating to the Covered Code. You may distribute the Executable version of Covered Code under a license of Your choice, which may contain terms different from this License, provided that You are in compliance with the terms of this License and that the license for the Executable ver-

sion does not attempt to limit or alter the recipient's rights in the Source Code version from the rights set forth in this License. If You distribute the Executable version under a different license You must make it absolutely clear that any terms which differ from this License are offered by You alone, not by the Initial Developer or any Contributor. You hereby agree to indemnify the Initial Developer and every Contributor for any liability incurred by the Initial Developer or such Contributor as a result of any such terms You offer.

### 3.7. Larger Works.

You may create a Larger Work by combining Covered Code with other code not governed by the terms of this License and distribute the Larger Work as a single product. In such a case, You must make sure the requirements of this License are fulfilled for the Covered Code.

## 4. Inability to Comply Due to Statute or Regulation.

If it is impossible for You to comply with any of the terms of this License with respect to some or all of the Covered Code due to statute or regulation then You must: (a) comply with the terms of this License to the maximum extent possible; and (b) describe the limitations and the code they affect. Such description must be included in the LEGAL file described in Section 3.4 and must be included with all distributions of the Source Code. Except to the extent prohibited by statute or regulation, such description must be sufficiently detailed for a recipient of ordinary skill to be able to understand it.

## 5. Application of this License.

This License applies to code to which the Initial Developer has attached the notice in Exhibit A, and to related Covered Code.

## 6. Versions of the License.

### 6.1. New Versions.

Floris van den Berg may publish revised and/or new versions of the License from time to time. Each version will be given a distinguishing version number.

### 6.2. Effect of New Versions.

Once Covered Code has been published under a particular version of the License, You may always continue to use it under the terms of that version. You may also choose to use such Covered Code under the terms of any subsequent version of the License published by Floris van den Berg. No one other than Floris van den Berg has the right to modify the terms applicable to Covered Code created under this License.

### 6.3. Derivative Works.

If you create or use a modified version of this License (which you may only do in order to apply it to code which is not already Covered Code governed by this License), you must (a) rename Your license so that the phrases "FreedImage", "FreedImage Public License", "FIPL", or any confusingly similar phrase do not appear anywhere in your license and (b) otherwise make it clear that your version of the license contains terms which differ from the FreedImage Public License. (Filling in the name of the Initial Developer, Original Code or Contributor in the notice described in Exhibit A shall not of themselves be deemed to be modifications of this License.)

## **7. DISCLAIMER OF WARRANTY.**

COVERED CODE IS PROVIDED UNDER THIS LICENSE ON AN "AS IS" BASIS, WITHOUT WARRANTY OF ANY KIND, EITHER EXPRESSED OR IMPLIED, INCLUDING, WITHOUT LIMITATION, WARRANTIES THAT THE COVERED CODE IS FREE OF DEFECTS, MERCHANTABILITY, FIT FOR A PARTICULAR PURPOSE OR NON-INFRINGEMENT. THE ENTIRE RISK AS TO THE QUALITY AND PERFORMANCE OF THE COVERED CODE IS WITH YOU. SHOULD ANY COVERED CODE PROVE DEFECTIVE IN ANY RESPECT, YOU (NOT THE INITIAL DEVELOPER OR ANY OTHER CONTRIBUTOR) ASSUME THE COST OF ANY NECESSARY SERVICING, REPAIR OR CORRECTION. THIS DISCLAIMER OF WARRANTY CONSTITUTES AN ESSENTIAL PART OF THIS LICENSE. NO USE OF ANY COVERED CODE IS AUTHORIZED HEREUNDER EXCEPT UNDER THIS DISCLAIMER.

## **8. TERMINATION.**

This License and the rights granted hereunder will terminate automatically if You fail to comply with terms herein and fail to cure such breach within 30 days of becoming aware of the breach. All sublicenses to the Covered Code which are properly granted shall survive any termination of this License. Provisions which, by their nature, must remain in effect beyond the termination of this License shall survive.

## **9. LIMITATION OF LIABILITY.**

UNDER NO CIRCUMSTANCES AND UNDER NO LEGAL THEORY, WHETHER TORT (INCLUDING NEGLIGENCE), CONTRACT, OR OTHERWISE, SHALL THE INITIAL DEVELOPER, ANY OTHER CONTRIBUTOR, OR ANY DISTRIBUTOR OF COVERED CODE, OR ANY SUPPLIER OF ANY OF SUCH PARTIES, BE LIABLE TO YOU OR ANY OTHER PERSON FOR ANY INDIRECT, SPECIAL, INCIDENTAL, OR CONSEQUENTIAL DAMAGES OF ANY CHARACTER INCLUDING, WITHOUT LIMITATION, DAMAGES FOR LOSS OF GOODWILL, WORK STOPPAGE, COMPUTER FAILURE OR MALFUNCTION, OR ANY AND ALL OTHER COMMERCIAL DAMAGES OR LOSSES, EVEN IF SUCH PARTY SHALL HAVE BEEN INFORMED OF THE POSSIBILITY OF SUCH DAMAGES. THIS LIMITATION OF LIABILITY SHALL NOT APPLY TO LIABILITY FOR DEATH OR PERSONAL INJURY RESULTING FROM SUCH PARTY'S NEGLIGENCE TO THE EXTENT APPLICABLE LAW PROHIBITS SUCH LIMITATION. SOME JURISDICTIONS DO NOT ALLOW THE EXCLUSION OR LIMITATION OF INCIDENTAL OR CONSEQUENTIAL DAMAGES, SO THAT EXCLUSION AND LIMITATION MAY NOT APPLY TO YOU.

## **10. U.S. GOVERNMENT END USERS.**

The Covered Code is a "commercial item," as that term is defined in 48 C.F.R. 2.101 (Oct. 1995), consisting of "commercial computer software" and "commercial computer software documentation," as such terms are used in 48 C.F.R. 12.212 (Sept. 1995). Consistent with 48 C.F.R. 12.212 and 48 C.F.R. 227.7202-1 through 227.7202-4 (June 1995), all U.S. Government End Users acquire Covered Code with only those rights set forth herein.

## **11. MISCELLANEOUS.**

This License represents the complete agreement concerning subject matter hereof. If any provision of this License is held to be unenforceable, such provision shall be reformed only to the extent necessary to make it enforceable. This License shall be governed by Dutch law provisions (except to the extent applicable law, if any, provides otherwise), excluding its conflict-of-law provisions. With

respect to disputes in which at least one party is a citizen of, or an entity chartered or registered to do business in, the The Netherlands: (a) unless otherwise agreed in writing, all disputes relating to this License (excepting any dispute relating to intellectual property rights) shall be subject to final and binding arbitration, with the losing party paying all costs of arbitration; (b) any arbitration relating to this Agreement shall be held in Almelo, The Netherlands; and (c) any litigation relating to this Agreement shall be subject to the jurisdiction of the court of Almelo, The Netherlands with the losing party responsible for costs, including without limitation, court costs and reasonable attorneys fees and expenses. Any law or regulation which provides that the language of a contract shall be construed against the drafter shall not apply to this License.

## **12. RESPONSIBILITY FOR CLAIMS.**

Except in cases where another Contributor has failed to comply with Section 3.4, You are responsible for damages arising, directly or indirectly, out of Your utilization of rights under this License, based on the number of copies of Covered Code you made available, the revenues you received from utilizing such rights, and other relevant factors. You agree to work with affected parties to distribute responsibility on an equitable basis.

### **EXHIBIT A.**

"The contents of this file are subject to the Freemage Public License Version 1.0 (the "License"); you may not use this file except in compliance with the License. You may obtain a copy of the License at <http://home.wxs.nl/~flvdberg/freemage-license.txt>

Software distributed under the License is distributed on an "AS IS" basis, WITHOUT WARRANTY OF ANY KIND, either express or implied. See the License for the specific language governing rights and limitations under the License.

## OpenSSL License

OpenSSL is covered by one of two licenses, depending on which release is involved. In all cases, there is a file named LICENSE in the top-level of the release. Copies can also be found here.

For the 3.0.0 release, and later releases derived from that, the Apache License v2 applies. This also applies to the git "master" branch.

For any release made before OpenSSL 3.0.0 (namely the 1.1.1, 1.1.0, 1.0.2, and all prior releases including those not currently supported), the dual OpenSSL and SSLeay license applies. Note that this is also true for any updates to those releases -- the "letter suffix" -- no matter when they are made. It also applies to the git branches for all those releases, and to any public forks that have not rebased to master (or 3.0.0).

## Patent License for OpenSSL

### 1. Definitions

1.1 "Licensor" means Phillip Rogaway, or One Shields Avenue, Davis, CA 95616-8562.

1.2 "Licensed Patents" means any patent that claims priority to United States Patent Application No. 09/918,615 entitled "Method and Apparatus for Facilitating Efficient Authenticated Encryption," and any utility, divisional, provisional, continuation, continuations in part, reexamination, reissue, or foreign counterpart patents that may issue with respect to the aforesaid patent application. This includes, but is not limited to, United States Patent No. 7,046,802; United States Patent No. 7,200,227; United States Patent No. 7,949,129; United States Patent No. 8,321,675; and any patent that issues out of United States Patent Application No. 13/669,114.

1.3 "Use in OpenSSL" means using, making, copying, modifying, distributing, having made, importing or having imported any program, software, or computer system containing or based upon the OpenSSL toolkit, but does not include any implementation of the Licensed Patents that is unrelated to the OpenSSL toolkit.

1.4 "Licensee" means the OpenSSL Software Foundation, at 1829 Mount Ephraim Road, Adamstown, MD 21710, its affiliates, assignees, or successors in interest, or anyone using, making, copying, modifying, distributing, having made, importing, or having imported any program, software, or computer system including or based upon the OpenSSL toolkit, or their customers, suppliers, importers, manufacturers, distributors, or resellers.

### 2. Grant of License

2.1 Licensor hereby grants to Licensee a perpetual, worldwide, non-exclusive, non-transferable, non-sublicensable, no-charge, royalty-free, irrevocable license to Use in OpenSSL any invention claimed in the Licensed Patents.

### 3. Disclaimer

3.1 LICENSEE'S USE OF THE LICENSED PATENTS IS AT LICENSEE'S OWN RISK AND UNLESS REQUIRED BY APPLICABLE LAW, LICENSOR MAKES NO REPRESENTATIONS OR WARRANTIES OF ANY KIND CONCERNING THE LICENSED PATENTS OR ANY PRODUCT EMBODYING ANY LICENSED PATENT, EXPRESS OR IMPLIED, STATUTORY OR OTHERWISE, INCLUDING, WITHOUT LIMITATION, WARRANTIES OF TITLE, MERCHANTABILITY, FITNESS FOR A PARTICULAR PURPOSE, OR NONINFRINGEMENT. IN NO EVENT WILL LICENSOR BE LIABLE FOR ANY CLAIM, DAMAGES OR OTHER LIABILITY, WHETHER IN CONTRACT, TORT OR OTHERWISE, ARISING FROM OR RELATED TO ANY USE OF THE LICENSED PATENTS, INCLUDING, WITHOUT LIMITATION, DIRECT, INDIRECT, INCIDENTAL, CONSEQUENTIAL, PUNITIVE OR SPECIAL DAMAGES, EVEN IF LICENSOR HAS BEEN ADVISED OF THE POSSIBILITY OF SUCH DAMAGES PRIOR TO SUCH AN OCCURRENCE.



## Apache License

Version 2.0, January 2004  
<https://www.apache.org/licenses/>

### TERMS AND CONDITIONS FOR USE, REPRODUCTION, AND DISTRIBUTION

#### 1. Definitions.

"License" shall mean the terms and conditions for use, reproduction, and distribution as defined by Sections 1 through 9 of this document.

"Licensor" shall mean the copyright owner or entity authorized by the copyright owner that is granting the License.

"Legal Entity" shall mean the union of the acting entity and all other entities that control, are controlled by, or are under common control with that entity. For the purposes of this definition, "control" means (i) the power, direct or indirect, to cause the direction or management of such entity, whether by contract or otherwise, or (ii) ownership of fifty percent (50%) or more of the outstanding shares, or (iii) beneficial ownership of such entity.

"You" (or "Your") shall mean an individual or Legal Entity exercising permissions granted by this License.

"Source" form shall mean the preferred form for making modifications, including but not limited to software source code, documentation source, and configuration files.

"Object" form shall mean any form resulting from mechanical transformation or translation of a Source form, including but not limited to compiled object code, generated documentation, and conversions to other media types.

"Work" shall mean the work of authorship, whether in Source or Object form, made available under the License, as indicated by a

copyright notice that is included in or attached to the work (an example is provided in the Appendix below).

"Derivative Works" shall mean any work, whether in Source or Object form, that is based on (or derived from) the Work and for which the editorial revisions, annotations, elaborations, or other modifications represent, as a whole, an original work of authorship. For the purposes of this License, Derivative Works shall not include works that remain separable from, or merely link (or bind by name) to the interfaces of, the Work and Derivative Works thereof.

"Contribution" shall mean any work of authorship, including the original version of the Work and any modifications or additions to that Work or Derivative Works thereof, that is intentionally submitted to Licensor for inclusion in the Work by the copyright owner or by an individual or Legal Entity authorized to submit on behalf of the copyright owner. For the purposes of this definition, "submitted" means any form of electronic, verbal, or written communication sent to the Licensor or its representatives, including but not limited to communication on electronic mailing lists, source code control systems, and issue tracking systems that are managed by, or on behalf of, the Licensor for the purpose of discussing and improving the Work, but excluding communication that is conspicuously marked or otherwise designated in writing by the copyright owner as "Not a Contribution."

"Contributor" shall mean Licensor and any individual or Legal Entity on behalf of whom a Contribution has been received by Licensor and subsequently incorporated within the Work.

2. Grant of Copyright License. Subject to the terms and conditions of this License, each Contributor hereby grants to You a perpetual, worldwide, non-exclusive, no-charge, royalty-free, irrevocable copyright license to reproduce, prepare Derivative Works of, publicly display, publicly perform, sublicense, and distribute the Work and such Derivative Works in Source or Object form.

3. Grant of Patent License. Subject to the terms and conditions of this License, each Contributor hereby grants to You a perpetual, worldwide, non-exclusive, no-charge, royalty-free, irrevocable (except as stated in this section) patent license to make, have made, use, offer to sell, sell, import, and otherwise transfer the Work, where such license applies only to those patent claims licensable by such Contributor that are necessarily infringed by their Contribution(s) alone or by combination of their Contribution(s) with the Work to which such Contribution(s) was submitted. If You institute patent litigation against any entity (including a cross-claim or counterclaim in a lawsuit) alleging that the Work or a Contribution incorporated within the Work constitutes direct or contributory patent infringement, then any patent licenses granted to You under this License for that Work shall terminate as of the date such litigation is filed.
4. Redistribution. You may reproduce and distribute copies of the Work or Derivative Works thereof in any medium, with or without modifications, and in Source or Object form, provided that You meet the following conditions:
  - (a) You must give any other recipients of the Work or Derivative Works a copy of this License; and
  - (b) You must cause any modified files to carry prominent notices stating that You changed the files; and
  - (c) You must retain, in the Source form of any Derivative Works that You distribute, all copyright, patent, trademark, and attribution notices from the Source form of the Work, excluding those notices that do not pertain to any part of the Derivative Works; and
  - (d) If the Work includes a "NOTICE" text file as part of its distribution, then any Derivative Works that You distribute must include a readable copy of the attribution notices contained

within such NOTICE file, excluding those notices that do not pertain to any part of the Derivative Works, in at least one of the following places: within a NOTICE text file distributed as part of the Derivative Works; within the Source form or documentation, if provided along with the Derivative Works; or, within a display generated by the Derivative Works, if and wherever such third-party notices normally appear. The contents of the NOTICE file are for informational purposes only and do not modify the License. You may add Your own attribution notices within Derivative Works that You distribute, alongside or as an addendum to the NOTICE text from the Work, provided that such additional attribution notices cannot be construed as modifying the License.

You may add Your own copyright statement to Your modifications and may provide additional or different license terms and conditions for use, reproduction, or distribution of Your modifications, or for any such Derivative Works as a whole, provided Your use, reproduction, and distribution of the Work otherwise complies with the conditions stated in this License.

5. Submission of Contributions. Unless You explicitly state otherwise, any Contribution intentionally submitted for inclusion in the Work by You to the Licensor shall be under the terms and conditions of this License, without any additional terms or conditions. Notwithstanding the above, nothing herein shall supersede or modify the terms of any separate license agreement you may have executed with Licensor regarding such Contributions.
6. Trademarks. This License does not grant permission to use the trade names, trademarks, service marks, or product names of the Licensor, except as required for reasonable and customary use in describing the origin of the Work and reproducing the content of the NOTICE file.
7. Disclaimer of Warranty. Unless required by applicable law or agreed to in writing, Licensor provides the Work (and each Contributor provides its Contributions) on an "AS IS" BASIS,

WITHOUT WARRANTIES OR CONDITIONS OF ANY KIND, either express or implied, including, without limitation, any warranties or conditions of TITLE, NON-INFRINGEMENT, MERCHANTABILITY, or FITNESS FOR A PARTICULAR PURPOSE. You are solely responsible for determining the appropriateness of using or redistributing the Work and assume any risks associated with Your exercise of permissions under this License.

8. **Limitation of Liability.** In no event and under no legal theory, whether in tort (including negligence), contract, or otherwise, unless required by applicable law (such as deliberate and grossly negligent acts) or agreed to in writing, shall any Contributor be liable to You for damages, including any direct, indirect, special, incidental, or consequential damages of any character arising as a result of this License or out of the use or inability to use the Work (including but not limited to damages for loss of goodwill, work stoppage, computer failure or malfunction, or any and all other commercial damages or losses), even if such Contributor has been advised of the possibility of such damages.
9. **Accepting Warranty or Additional Liability.** While redistributing the Work or Derivative Works thereof, You may choose to offer, and charge a fee for, acceptance of support, warranty, indemnity, or other liability obligations and/or rights consistent with this License. However, in accepting such obligations, You may act only on Your own behalf and on Your sole responsibility, not on behalf of any other Contributor, and only if You agree to indemnify, defend, and hold each Contributor harmless for any liability incurred by, or claims asserted against, such Contributor by reason of your accepting any such warranty or additional liability.

END OF TERMS AND CONDITIONS

## zlib

### License Agreement

Copyright (C) 1995–2005 Jean-loup Gailly and Mark Adler

This software is provided 'as-is', without any express or implied warranty. In no event will the authors be held liable for any damages arising from the use of this software.

Permission is granted to anyone to use this software for any purpose, including commercial applications, and to alter it and redistribute it freely, subject to the following restrictions:

1. The origin of this software must not be misrepresented; you must not claim that you wrote the original software. If you use this software in a product, an acknowledgment in the product documentation would be appreciated but is not required.
2. Altered source versions must be plainly marked as such, and must not be misrepresented as being the original software.
3. This notice may not be removed or altered from any source distribution.

Jean-loup Gailly, jloup@gzip.org

Mark Adler, madler@alumni.caltech.edu

## 7-Zip

### 7-Zip License

License for use and distribution  
7-Zip Copyright (C) 1999-2020 Igor Pavlov.

The licenses for files are:

1) 7z.dll:

The "GNU LGPL" as main license for most of the code

The "GNU LGPL" with "unRAR license restriction" for some code

The "BSD 3-clause License" for some code

2) All other files: the "GNU LGPL".

Redistributions in binary form must reproduce related license information from this file.

Note:

You can use 7-Zip on any computer, including a computer in a commercial organization. You don't need to register or pay for 7-Zip.

### GNU LGPL information

This library is free software; you can redistribute it and/or modify it under the terms of the GNU Lesser General Public License as published by the Free Software Foundation; either version 2.1 of the License, or (at your option) any later version.

This library is distributed in the hope that it will be useful, but WITHOUT ANY WARRANTY; without even the implied warranty of MERCHANTABILITY or FITNESS FOR A PARTICULAR PURPOSE. See the GNU Lesser General Public License for more details.

You can receive a copy of the GNU Lesser General Public License from <http://www.gnu.org/>

## BSD 3-clause License

The "BSD 3-clause License" is used for the code in 7z.dll that implements LZFSE data decompression. That code was derived from the code in the "LZFSE compression library" developed by Apple Inc, that also uses the "BSD 3-clause License":

Copyright (c) 2015-2016, Apple Inc. All rights reserved.

Redistribution and use in source and binary forms, with or without modification, are permitted provided that the following conditions are met:

1. Redistributions of source code must retain the above copyright notice, this list of conditions and the following disclaimer.
2. Redistributions in binary form must reproduce the above copyright notice, this list of conditions and the following disclaimer in the documentation and/or other materials provided with the distribution.
3. Neither the name of the copyright holder(s) nor the names of any contributors may be used to endorse or promote products derived from this software without specific prior written permission.

THIS SOFTWARE IS PROVIDED BY THE COPYRIGHT HOLDERS AND CONTRIBUTORS "AS IS" AND ANY EXPRESS OR IMPLIED WARRANTIES, INCLUDING, BUT NOT LIMITED TO, THE IMPLIED WARRANTIES OF MERCHANTABILITY AND FITNESS FOR A PARTICULAR PURPOSE ARE DISCLAIMED. IN NO EVENT SHALL THE COPYRIGHT OWNER OR CONTRIBUTORS BE LIABLE FOR ANY DIRECT, INDIRECT, INCIDENTAL, SPECIAL, EXEMPLARY, OR CONSEQUENTIAL DAMAGES (INCLUDING, BUT NOT LIMITED TO, PROCUREMENT OF SUBSTITUTE GOODS OR SERVICES; LOSS OF USE, DATA, OR PROFITS; OR BUSINESS INTERRUPTION) HOWEVER CAUSED AND ON ANY THEORY OF LIABILITY, WHETHER IN CONTRACT, STRICT LIABILITY, OR TORT (INCLUDING NEGLIGENCE OR OTHERWISE) ARISING IN ANY WAY OUT OF THE USE OF THIS SOFTWARE, EVEN IF ADVISED OF THE POSSIBILITY OF SUCH DAMAGE.

## unRAR license restriction

The decompression engine for RAR archives was developed using source code of unRAR program. All copyrights to original unRAR code are owned by Alexander Roshal.

The license for original unRAR code has the following restriction:

The unRAR sources cannot be used to re-create the RAR compression algorithm, which is proprietary. Distribution of modified unRAR sources in separate form or as a part of other software is permitted, provided that it is clearly stated in the documentation and source comments that the code may not be used to develop a RAR (WinRAR) compatible archiver.



- B**
  - Btrieve
    - settings *49*
- C**
  - Copy Protection
    - Softlock *4*
- D**
  - Data execution prevention *3*
  - Data security *3*
  - Database problems *49*
- I**
  - Installation
    - full *26*
    - preparing *23*
    - Softlock *14*
    - Update *51*
- L**
  - Languages *28, 31*
- M**
  - Multitenancy *4*
- N**
  - Network *4*
- P**
  - Problems
    - on startup *49*
  - PSQL *71*
- S**
  - Settings from other program version
    - 65*
  - Softlock *4*
    - activate *15*
    - activation code *16*
    - installation *14, 45*
    - validity period *22*
  - Status
    - 12 73*
    - 20 73*
    - 85 73*
    - 88 73*
- T**
  - 9 *73*
  - Status *161 73*
  - System requirements *1*
- T**
  - Training *66*
- U**
  - Update *51*
  - updates *56*
  - User manager *3*
- W**
  - Windows
    - user privileges *49*
  - Windows 10 *2*
  - Windows 11 *2*
  - Windows 8.1 *2*
  - Windows Server 2012 R2 *2, 7*
  - Windows Server 2016 *2*
  - Windows Server 2019 *2*
  - Windows Server 2022 *2*
  - Windows Terminalserver *65*

